

REVISION

DESIGNED & DIMENSIONED
IN MILLIMETERS [INCHES]

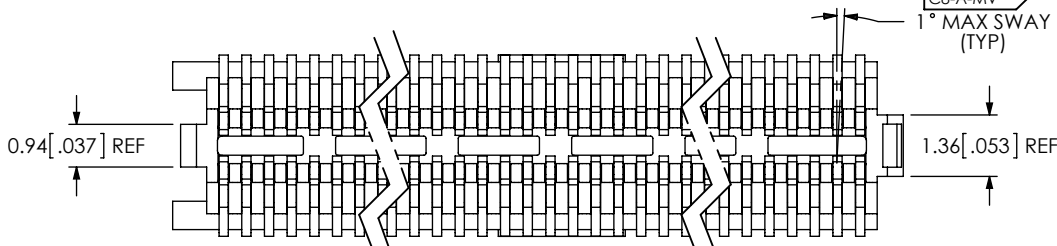
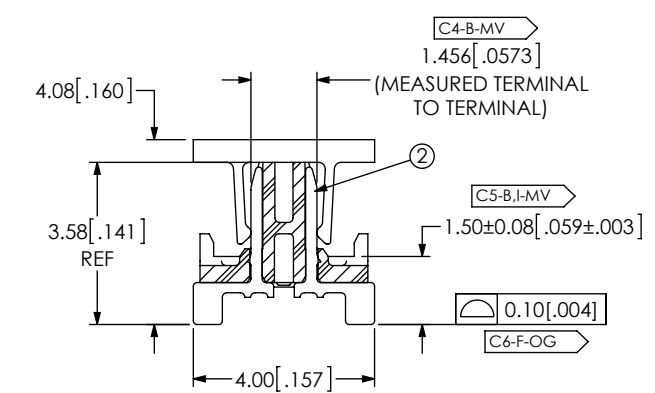
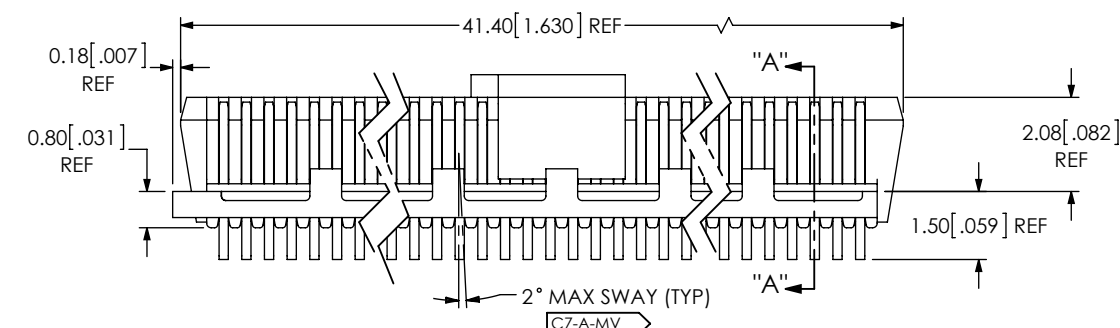
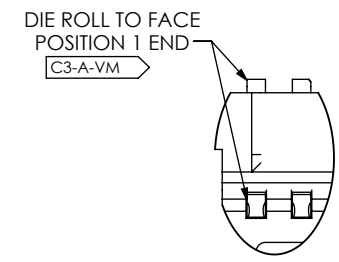
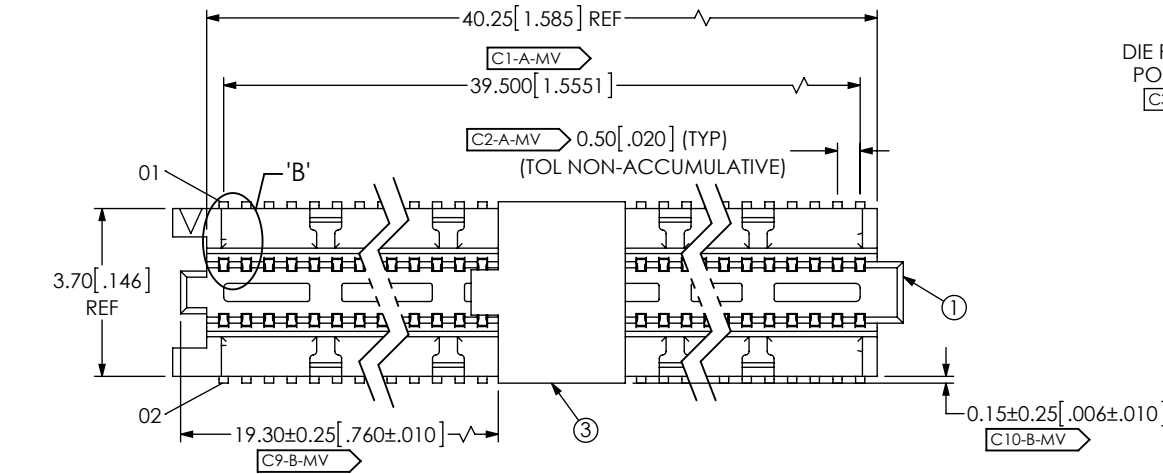
- NOTES:
1. SET UP FOR CUSTOMER PROJECT TRACKING NOT AVAILABLE AS STANDARD.
 2. [Cx-x.xx] REPRESENTS A CRITICAL DIMENSION.
 3. MINIMUM PUSHOUT FORCE: SIGNAL: 1.11N [0.25 LB].
 4. FOR QUANTITIES UP TO 49 PIECES, NO LEADER, TRAILER, OR REEL WILL BE SUPPLIED.
FOR QUANTITIES OF 50-124 PIECES, NO LEADER OR TRAILER WILL BE SUPPLIED.
 5. PARTS TO BE PACKAGED IN TAPE & REEL.

0	CW	L Murdaca
4/5/2016	ECN-272381	
ISSUE FOR REVIEW		

NOT RELEASED
FOR PRODUCTION
USE FOR QUOTING, PRELIMINARY
DESIGN, PROTOTYPING AND
INFORMATIONAL PURPOSES ONLY

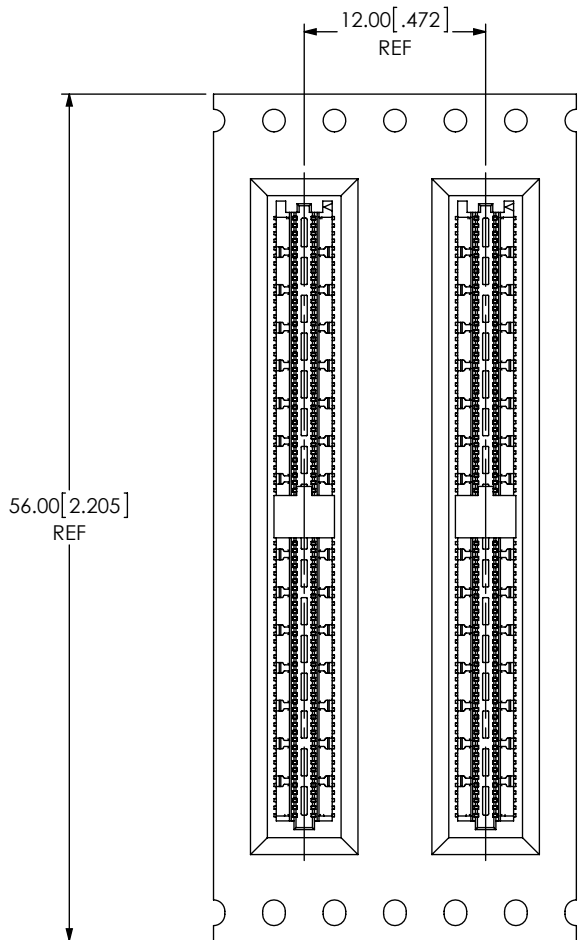
BY SIGNING THIS DOCUMENT
YOU ARE ACCEPTING THE
CONDITIONS SET WITHIN.
YOUR REQUIREMENTS MUST BE
LISTED WITHIN THIS DRAWING.
WHERE NO DIRECTION FROM THE
CUSTOMER IS IDENTIFIED
SAMTEC'S PROCESS
REQUIREMENTS WILL BE USED.

DATE: _____
COMPANY: _____
CUSTOMER SIGNATURE: _____
PRINTED NAME: _____
PHONE NO: _____
EXCEPTIONS: _____

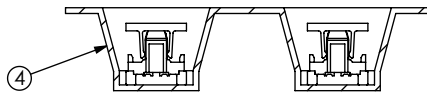


<p>UNLESS OTHERWISE SPECIFIED, DIMENSIONS ARE IN MILLIMETERS. TOLERANCES ARE:</p> <p>DECIMALS ANGLES</p> <p>X.X: ±0.3 [.01] 2°</p> <p>X.XX: ±0.13 [.005]</p> <p>X.XXX: ±0.051 [.0020]</p>	<p>PROPRIETARY NOTE</p> <p>* THIS DOCUMENT CONTAINS CONFIDENTIAL AND PROPRIETARY INFORMATION AND ALL DESIGN, MANUFACTURING, REPRODUCTION, USE, PATENT RIGHTS AND SALES RIGHTS ARE EXPRESSLY RESERVED BY SAMTEC, INC. THIS DOCUMENT SHALL NOT BE DISCLOSED, IN WHOLE OR PART, TO ANY UNAUTHORIZED PERSON OR ENTITY NOR REPRODUCED, TRANSFERRED OR INCORPORATED IN ANY OTHER PROJECT IN ANY MANNER WITHOUT THE EXPRESS WRITTEN CONSENT OF SAMTEC, INC.</p>	<p>520 PARK EAST BLVD, NEW ALBANY, IN 47150 PHONE: 812-944-6733 FAX: 812-948-5047 e-Mail info@SAMTEC.com code 53322</p>

ITEM NO.	PART NUMBER	QUANTITY	MATERIAL
1	ST5-80-1.00-D	1.0000	VECTRA S475, COLOR: BLACK
2	T-1M50-1.50-L	160.00	VECTRA E130, COLOR: BLACK
3	PPP-65	1.0000	PHOS BRONZE, 510, SPRING TEMPER
4	CT-ST5012MS	1.0878	CONDUCTIVE POLYMER



USER DIRECTION OF UN-REELING →
POCKET NOT DETAILED



PACKAGING VIEW

PROPRIETARY NOTE

THIS DOCUMENT CONTAINS CONFIDENTIAL AND PROPRIETARY INFORMATION AND ALL DESIGN, MANUFACTURING, REPRODUCTION, USE, PATENT RIGHTS AND SALES RIGHTS ARE EXPRESSLY RESERVED BY SAMTEC, INC. THIS DOCUMENT SHALL NOT BE DISCLOSED, IN WHOLE OR PART, TO ANY UNAUTHORIZED PERSON OR ENTITY NOR REPRODUCED, TRANSFERRED OR INCORPORATED IN ANY OTHER PROJECT IN ANY MANNER WITHOUT THE EXPRESS WRITTEN CONSENT OF SAMTEC, INC.



520 PARK EAST BLVD., NEW ALBANY, IN 47150
PHONE: 812-944-6733 FAX: 812-948-5047
e-Mail: info@SAMTEC.com code 55322

SHEET SCALE: 2:1

DESCRIPTION:
0.5mm TERMINAL STRIP ASSEMBLY

DWG. NO.
REF-192552-02

BY: CANDY W 04/06/2016 SHEET 2 OF 2