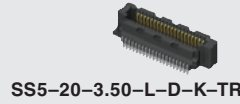




(0,50 mm) .0197"



SS5-20-3.00-L-D-K-TR



SS5 SERIES

# ULTRA FINE PITCH SOCKET

## SPECIFICATIONS

For complete specifications and recommended PCB layouts see [www.samtec.com?SS5](http://www.samtec.com?SS5)

**Insulator Material:**

Black LCP

**Contact Material:**

Phosphor Bronze

**Plating:**

Au or Sn over 50µ" (1,27 µm) Ni

**Operating Temp Range:**

-55°C to +125°C

**Current Rating:**

1.5 A per pin (1 pin powered per row)

**RoHS Compliant:**

Yes

**Processing:**

Lead-Free Solderable:

Yes

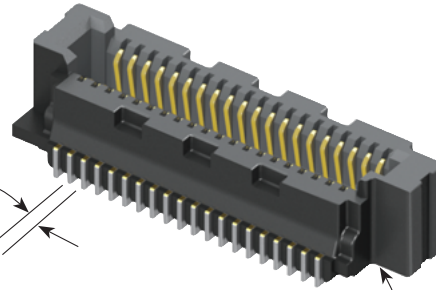
**SMT Lead Coplanarity:**

(0,10 mm) .004" max

Mates with:

ST5

Ultra-fine  
(0,50 mm)  
.0197" pitch



Stack heights of 4 mm, 4,5 mm & 5 mm

Narrow body design saves space on board

SS5/ST5 5 mm Stack Height	Rated @ 3dB Insertion Loss*
Single-Ended Signaling	13.5 GHz / 27 Gbps
Differential Pair Signaling	20 GHz / 40 Gbps

\*Test board losses de-embedded from performance data.  
Performance data for other stack heights and complete test data available at [www.samtec.com?SS5](http://www.samtec.com?SS5) or contact [sig@samtec.com](mailto:sig@samtec.com)

28+  
G b p s

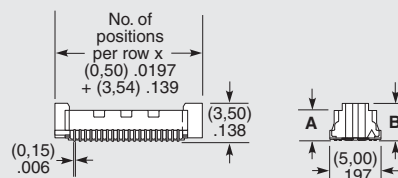
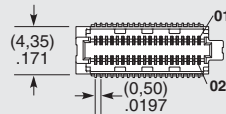
## ALSO AVAILABLE (MOQ Required)

- Other lead styles
- Contact Samtec.



MATED HEIGHT*		
ST5 LEAD STYLE	SS5 LEAD STYLE	
	-3.00	-3.50
-1.00	(4,00) .157	(4,50) .177
-1.50	(4,50) .177	(5,00) .197

\*Processing conditions will affect mated height.



LEAD STYLE	A	B
-3.00	(2,85) .112	(3,50) .138
-3.50	(3,35) .132	(4,00) .157

Note: Some lengths, styles and options are non-standard, non-returnable.