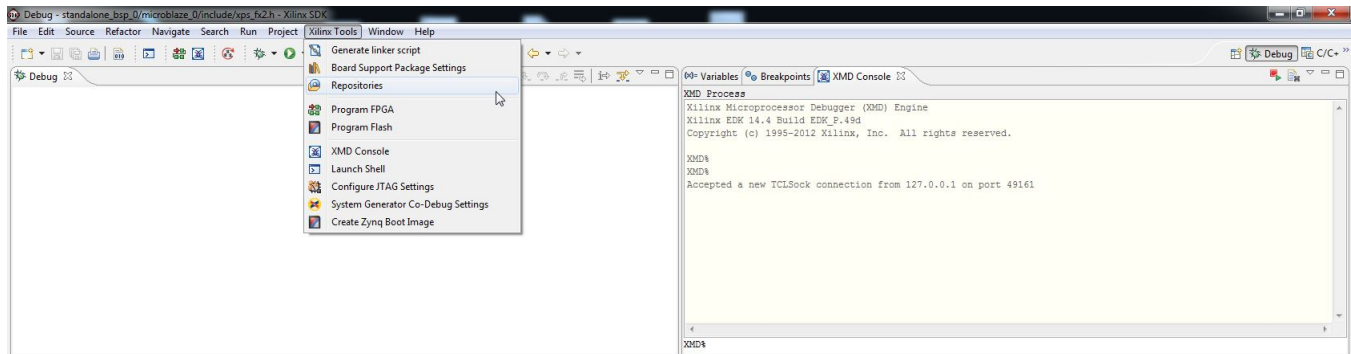


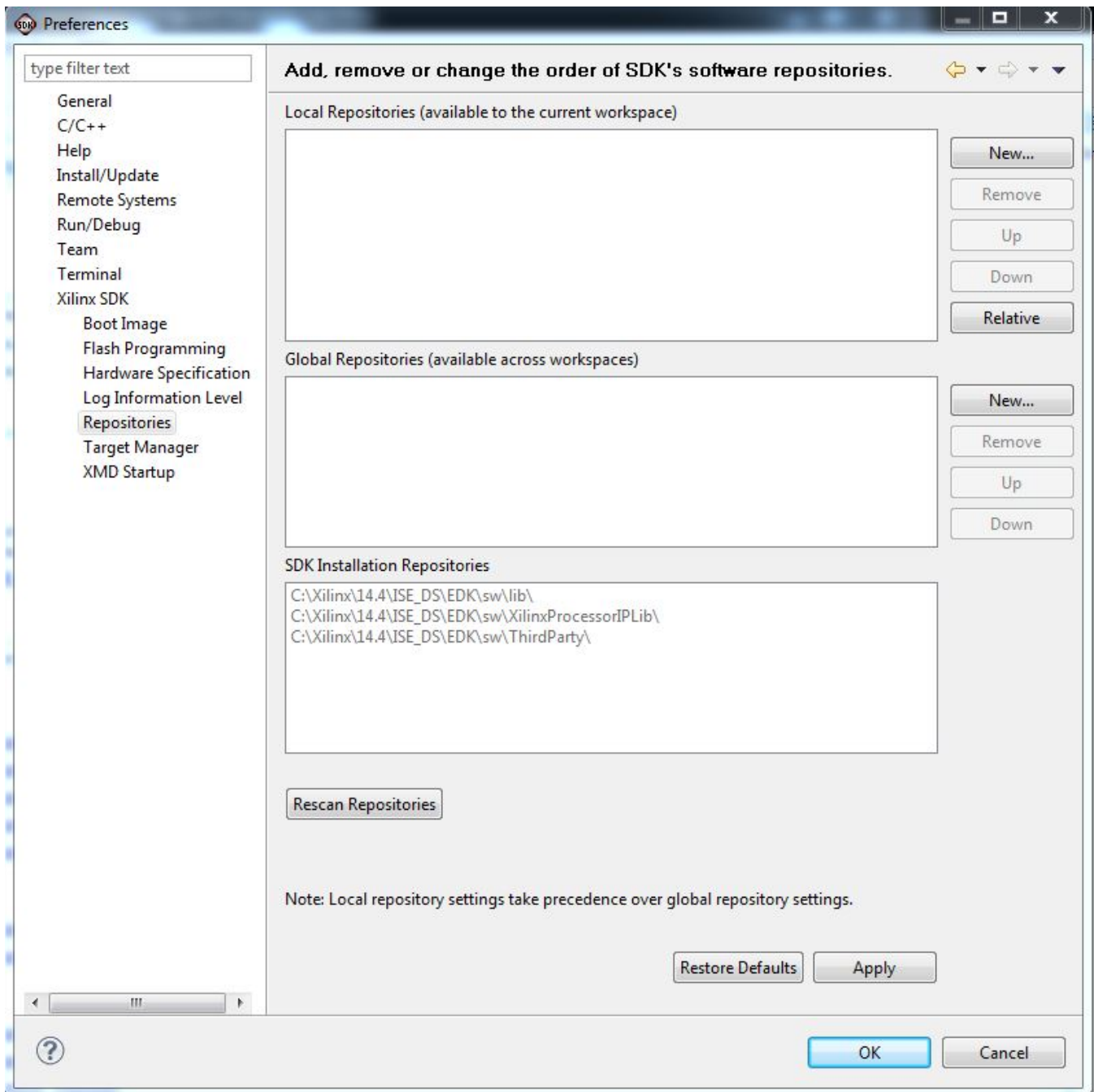
# Set the repositories for device driver of custom block used in SDK Microblaze project

Click Xilinx "Xilinx Tools" and then "Repositories"



**XilinxSDKProjectRepositories**

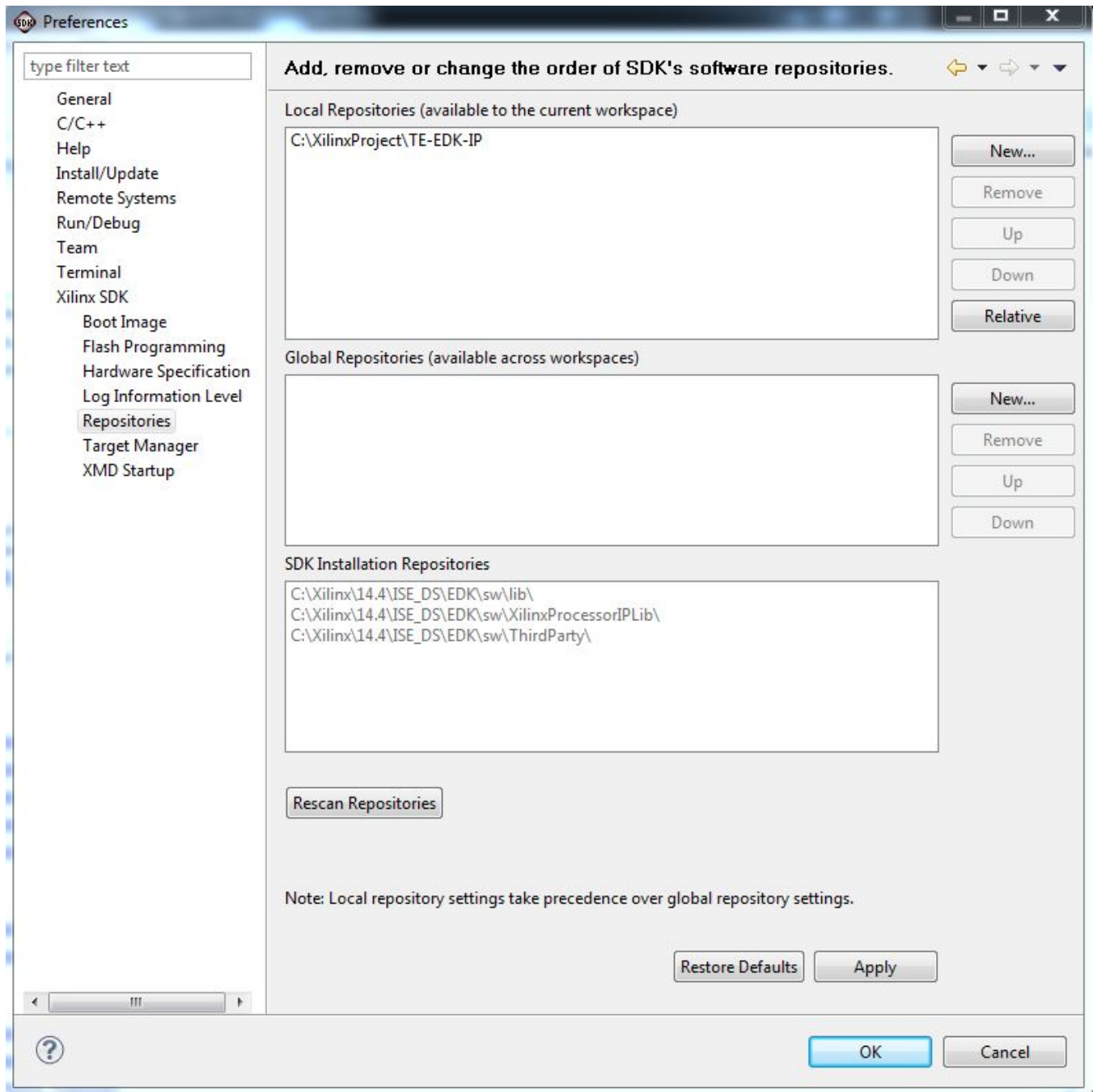
After this a pop-up "Preferences" will appear.



#### Add Reference Repositories for custom driver of custom block/device

Click "New..." button of "Local Repositories (available to the current workspace)"

Select "C:\XilinxProject\TE-EDK-IP".



Add reference with double indirection (as required by Xilinx SDK)

Click "Apply".

You should click "OK".

After this, you should wait until the building procedure ended.