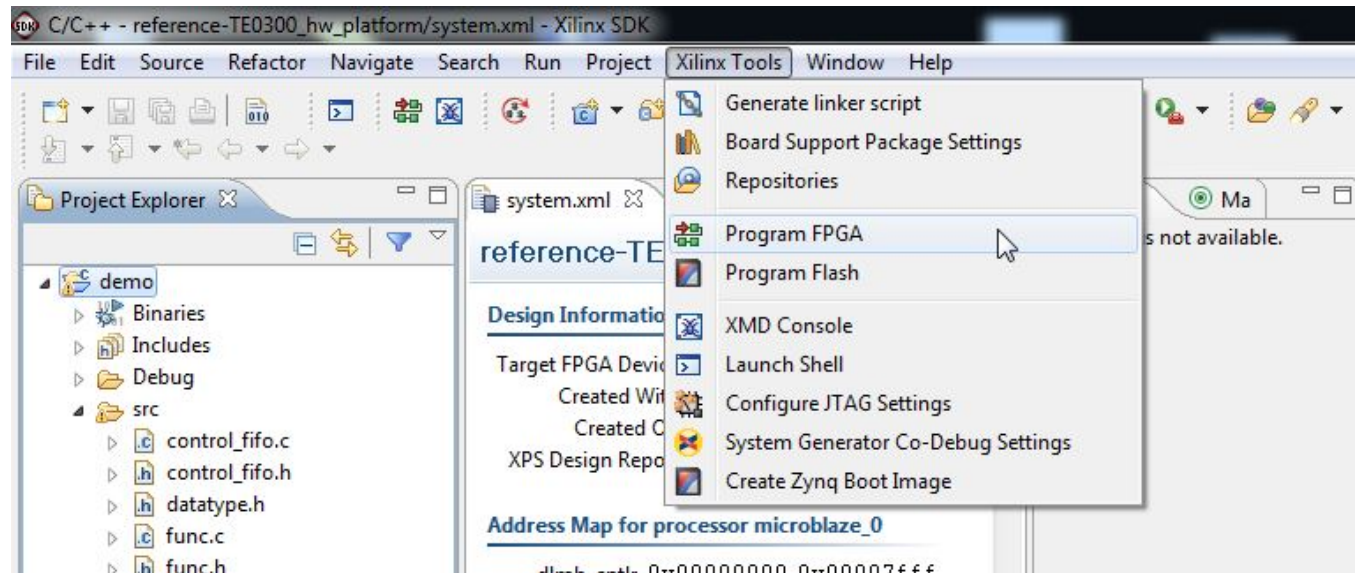


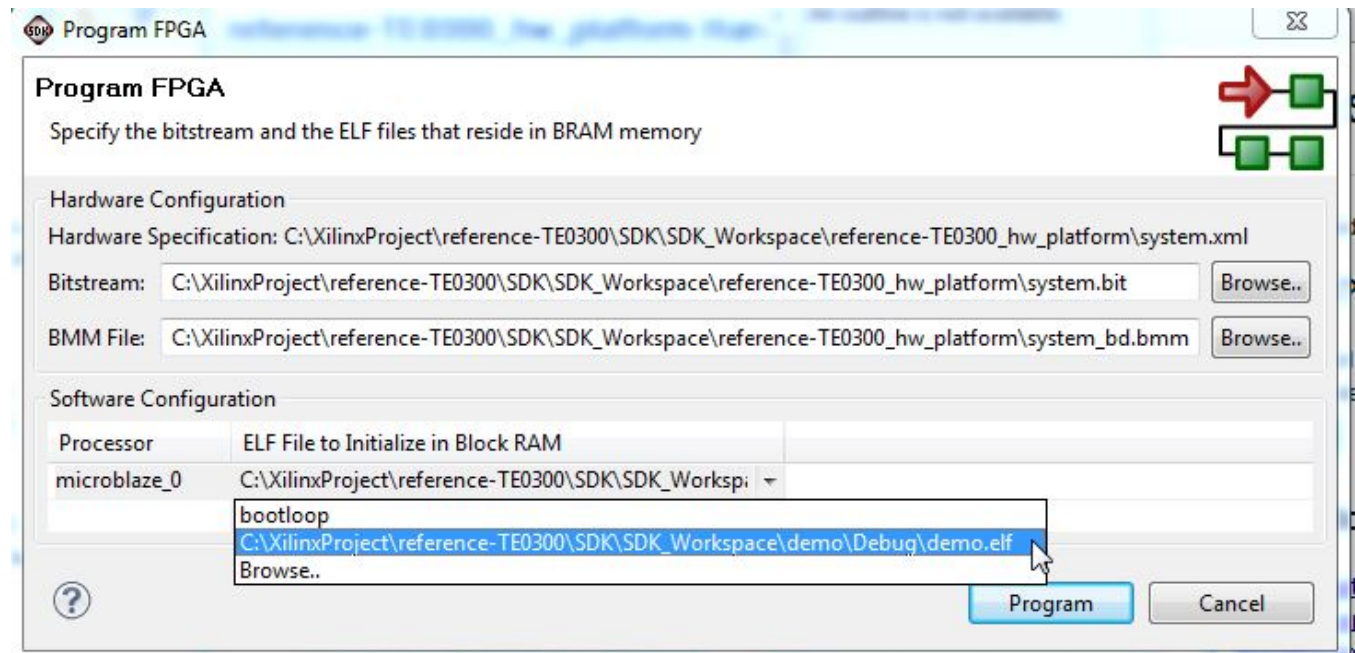
Download the bitstream and the elf file

Now you should click "Xilinx Tools" and select "Program FPGA"



Program FPGA step 1

Now you should select the .bit bitstream file (that create the Microblaze system) and the .elf file (that runs on the Microblaze system) to download in Microblaze BRAM memory; in this case select bootloop. The next step will automatically download demo.elf on Microblaze.



Program FPGA step 2, select .bit file bitstream and the .elf file running on Microblaze