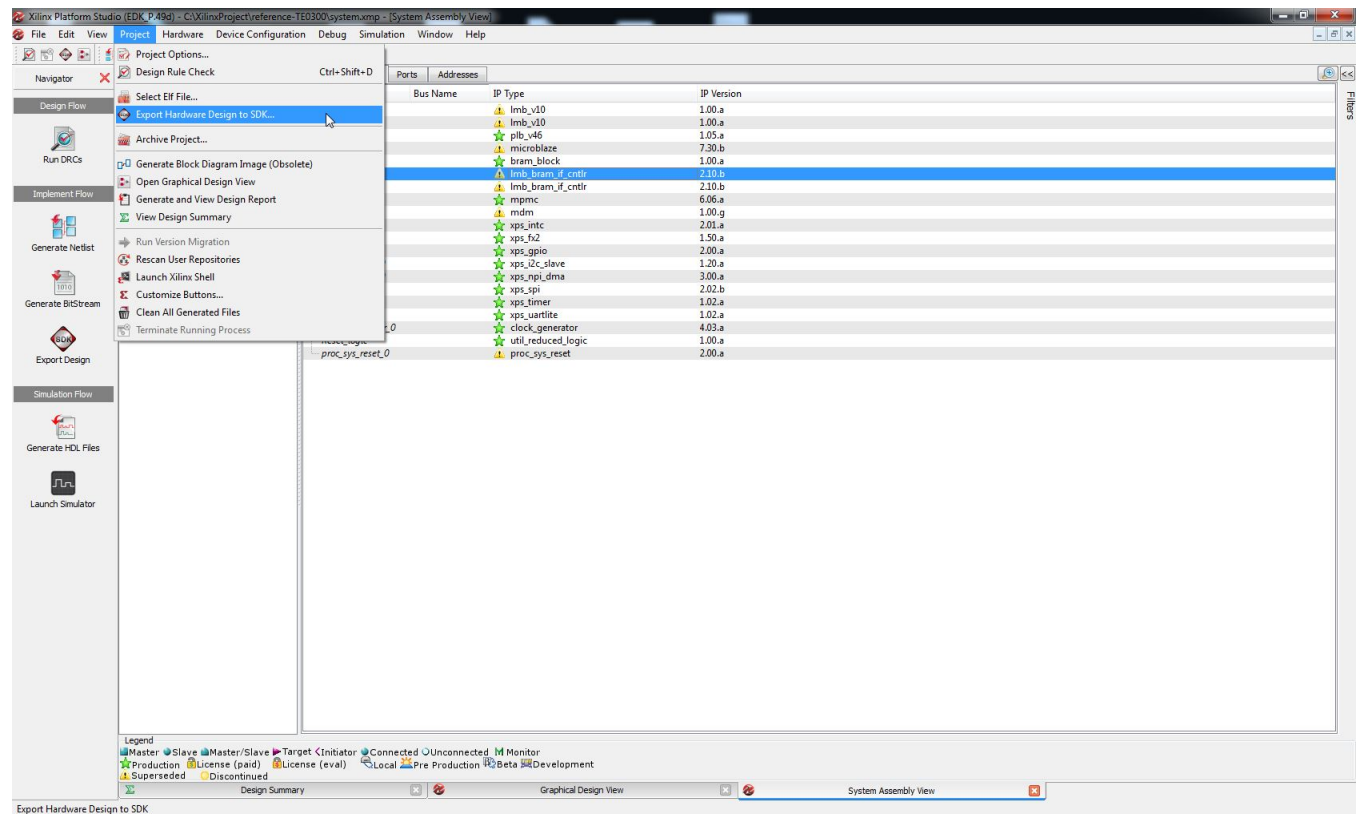


Export Hardware Design to SDK

To compile the project, you should click "Project" and then "Export Hardware Design to SDK..."



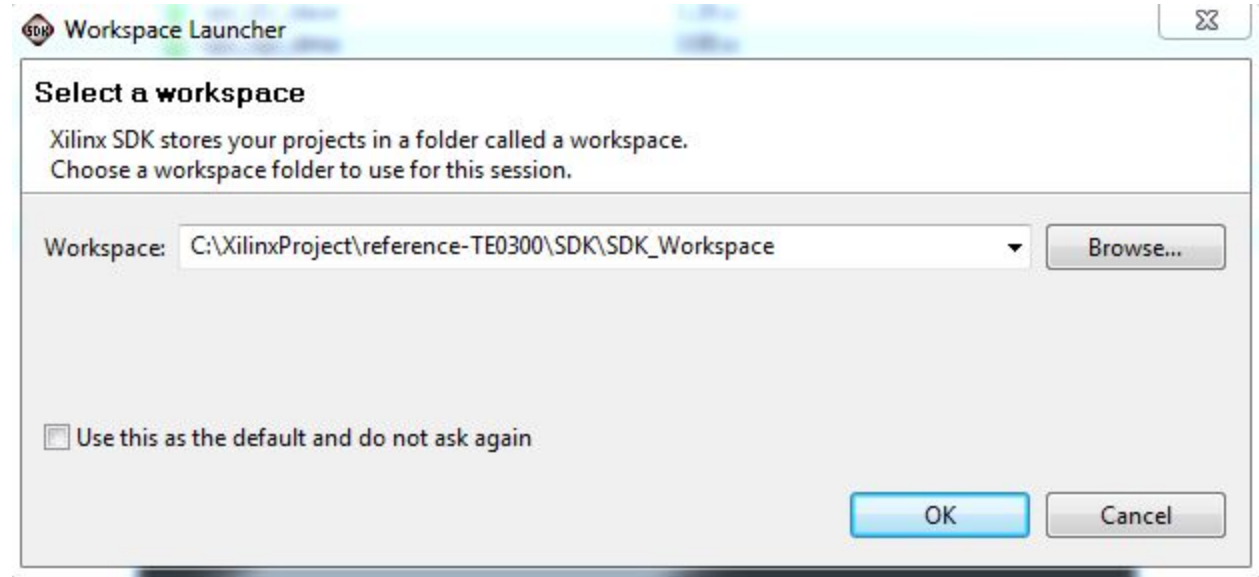
"Project" and then "Export Hardware Design to SDK..."

A new pop-up will appear and you should click "Export and Launch SDK".



Pop-up "Export & Launch SDK"

A new pop-up will appear. Select a proper workspace: for example "C:\XilinxProject\reference-TE0300\SDK\SDK_Workspace".



Workspace launcher



Resynthesis of reference HW could take from 10 minutes to 1 hour; it depends on which computer is used (workstation, regular PC or low-end PC).

After some times the project is exported from XPS to SDK. "system.xml" is exported in the hw folder of and SDK project: "C:\XilinxProject\reference-TE0300\SDK\SDK_Export\hw\system.xml".