

# TEB0707 TRM

[Download PDF version of this document.](#)

## Table of Contents

- [Overview](#)
  - [Key Features](#)
  - [Block Diagram](#)
  - [Main Components](#)
  - [Initial Delivery State](#)
  - [Configuration Signals](#)
- [Signals, Interfaces and Pins](#)
  - [Board to Board \(B2B\)](#)
  - [CRUVI B2B Connectors](#)
  - [JTAG Interface](#)
  - [SD Card socket](#)
  - [Micro USB2.0 Socket](#)
  - [USB A Socket](#)
  - [RJ45 LAN Socket](#)
  - [Jumpers](#)
  - [Pin Header](#)
  - [Test Points](#)
- [On-board Peripherals](#)
  - [Intel Max10 CPLD](#)
  - [FTDI FT2232H](#)
  - [LEDs](#)
  - [EEPROM](#)
  - [DIP Switch](#)
  - [Push Buttons](#)
  - [Clock Sources](#)
- [Power and Power-On Sequence](#)
  - [Power Supply](#)
  - [Power Consumption](#)
  - [Power Distribution Dependencies](#)
  - [Power-On Sequence](#)
  - [Power Rails](#)
  - [Bank Voltages](#)
- [Board to Board Connectors](#)
  - [Connector Mating height](#)
  - [Connector Speed Ratings](#)
  - [Current Rating](#)
  - [Connector Mechanical Ratings](#)
  - [Manufacturer Documentation](#)
- [CRUVI Connectors](#)
  - [Connector Mating height](#)
  - [Current Rating](#)
  - [Speed Rating](#)
  - [Operating Temp Range](#)
- [Technical Specifications](#)
  - [Absolute Maximum Ratings](#)
  - [Recommended Operating Conditions](#)
  - [Physical Dimensions](#)
- [Currently Offered Variants](#)
- [Revision History](#)
  - [Hardware Revision History](#)
  - [Document Change History](#)
- [Disclaimer](#)
  - [Data Privacy](#)
  - [Document Warranty](#)
  - [Limitation of Liability](#)
  - [Copyright Notice](#)
  - [Technology Licenses](#)
  - [Environmental Protection](#)
  - [REACH, RoHS and WEEE](#)

## Overview

The Trenz Electronic TEB0707 is a carrier for 4 x 5 Trenz Electronic modules. It provides three high speed and one low speed CRUVI extension connectors. For more information, please refer to the [CRUVI B2B Connectors](#). The TEB0707 is integrated with an Intel MAX10 FPGA as system controller and is equipped with a Micro USB2.0 Socket with FTDI to JTAG/UART solution, RJ45 LAN Socket, USB A Socket, Micro SD Card Socket, User LEDs, Push Buttons and DIP Switches for controlling the SoM.

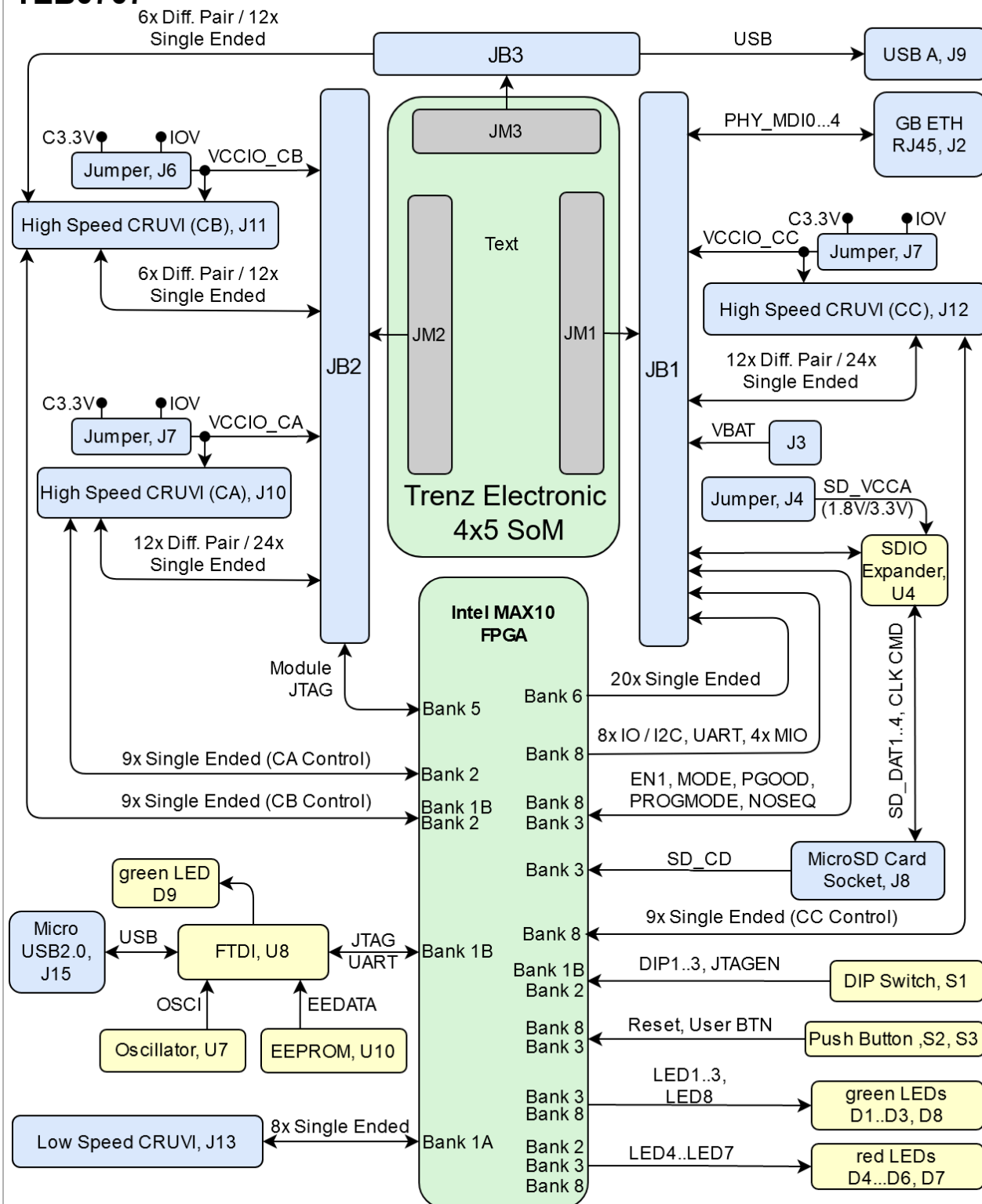
Refer to <http://trenz.org/teb0707-info> for the current online version of this manual and other available documentation.

## Key Features

- **Modules**
  - 4x5 Trenz Electronic modules
- **RAM/Storage**
  - EEPROM (FTDI Configuration)
- **On Board**
  - Intel Max 10 FPGA
  - FTDI FT2223
  - 6x User LEDs (3x green, 3x red)
  - 2x Status LED
  - DIP Switch
  - Push Buttons
- **Interface**
  - Gigabit RJ45 LAN socket
  - SD Card socket
  - Micro USB2.0 Socket
  - USB A Socket
  - 3x High Speed CRUVI B2B Connectors
  - 1x Low Speed CRUVI B2B Connector
  - 4x Jumpers
- **Power**
  - 5V Input Power Supply
- **Dimension**
  - 135 x 68 mm
- **Notes**

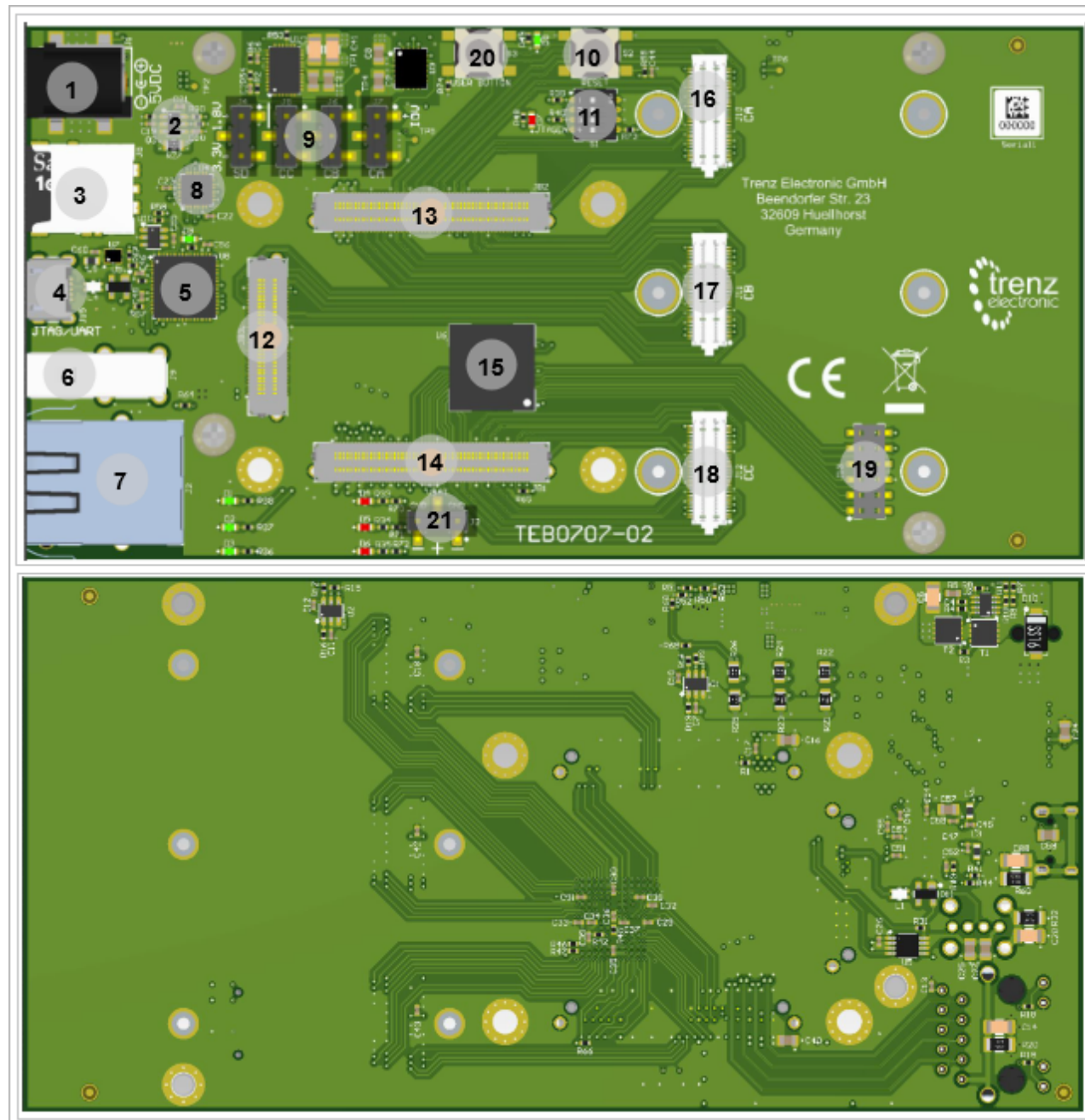
## Block Diagram

# TEB0707



TEB0707 block diagram

## Main Components



TEB0707 main components

1. Barrel Jack Power Supply, J1

2. Voltage Regulator, U1
3. Micro SD Card Socket, J8
4. Micro USB2.0 Socket, J15
5. FT2232H FTDI, U8
6. USB A Socket, J9
7. RJ45 LAN Socket, J2
8. SDIO Port Expander, U4
9. Jumpers, J4...7
10. Push Button (Reset), S2
11. DIP Switch, S1
12. B2B Connector, JB3
13. B2B Connector, JB2
14. B2B Connector, JB1
15. Intel MAX 10 FPGA, U6
16. High Speed CRUVI Connector, J10
17. High Speed CRUVI Connector, J11
18. High Speed CRUVI Connector, J12
19. Low Speed CRUVI Connector, J13
20. User Push Button, S3
21. Pin header, J3

### Initial Delivery State

Storage device name	Content	Notes
EEPROM	Programmed	FTDI Configuration

Initial delivery state of programmable devices on the module

### Configuration Signals

MODE Signal State	Boot Mode
MODE	Boot Mode: <ul style="list-style-type: none"> <li>SD Card (Low)</li> <li>QSPI (High)</li> </ul>
PROG MODE	Programming Mode: <ul style="list-style-type: none"> <li>select between CPLD (low, closed, on)</li> <li>on SoM or FPGA/SoC (high, open, off )</li> </ul>

Boot process.

Signal	Connected to	I/O	Note
Reset	Push Button, S2	Out	Module Reset signal

Reset process.

### Signals, Interfaces and Pins

#### Board to Board (B2B)

Interfaces and Number of I/O signals connected to the B2B connectors for Trenz 4x5 modules:

B2B Connector	Interface	I/O Signal Count	Connected to	Notes
JB1	Ethernet LAN	4x Diff pairs	RJ45 Socket, J2	
	SD Card	6 x Single Ended	IO Expander, U4	
	I/Os	20x Single Ended	MAX10 FPGA Bank 6, U6	
	CRUVI	12x Diff pairs/24x Single ended 4x Single Ended	High Speed CRUVI, J12	CRUVI C
	SoM Control Signals	5x Single Ended	MAX10 FPGA, U6	
	I/Os	8x Single ended	MAX10 FPGA Bank 8, U6	
JB2	CRUVI	12x Diff pairs/24x Single ended 4x Single Ended	High Speed CRUVI, J10	CRUVI A
	CRUVI	6x Diff pairs/12x Single ended	High Speed CRUVI, J11	CRUVI B
	JTAG	4x Single Ended	FPGA Bank 5, U6	
JB3	CRUVI	6x Diff pairs/12x Single ended 4x Single Ended	High Speed CRUVI, J11	CRUVI B
	USB	1x Diff pair, 2x Single Ended	USB A, J9	

General PL I/O to B2B connectors information

## CRUVI B2B Connectors

The TEMB0707 is equipped with a Low Speed Connectors J 13 and three High Speed Connector J10...12. These connectors are provided for CRUVI extension cards. More information is provided in the [B2B Connectors](#) section.

Speed	Designators	Schematic	Connected to	Notes
High	CRUVI C, J12	A0...A5 (N/P)	B2B, JB1	
		B0...B5 (N/P)	B2B, JB1	
		MODE, REFCLK, SMB_ALERT, SMB_SDA, SMB_SCL, SEL, DO, DI, SCK	MAX10 FPGA Bank 8, U6	3.3V User IOs (Max10 Firmware dependent)
		HSIO, HI, HO, RESET	B2B, JB1	
High	CRUVI B, J11	A0...A5 (N/P)	B2B, JB1	
		B0...B5 (N/P)	B2B, JB1	
		MODE, REFCLK, SMB_ALERT, SMB_SDA, SMB_SCL, SEL, DO, DI, SCK	MAX10 FPGA Bank 2/3, U6	3.3V User IOs (Max10 Firmware dependent)
		HSIO, HSI, HSO, RESET	B2B, JB3	
High	CRUVI A, J13	A0...A5 (N/P)	B2B, JB2	
		B0...B5 (N/P)	B2B, JB2	

		MODE, REFCLK, SMB_ALERT, SMB_SDA, SMB_SCL, SEL, DO, DI, SCK	MAX10 FPGA Bank 2/3, U6	3.3V User IOs (Max10 Firmware dependent)
		HSIO, HSI, HSO, RESET	B2B, JB2	
Low	CRUVI	X0...X7	MAX10 FPGA Bank 1A, U6	

#### CRUVI B2B connectors information

## JTAG Interface

JTAG signals form FTDI U8 are routed to MAX10 CPLD. Via dip setting JTAG of MAX10 or JTAG of the connected Trenz 4x5 module can be selected. Forwarding signals to SoM is MAX10 Firmware dependent.

JTAG Signal	MAX10 Pin Bank 1B, U6	Connected to
TMS	G1	FTDI (U8) - ADBUS3
TDI	F5	FTDI (U8) - ADBUS1
TDO	F6	FTDI (U8) - ADBUS2
TCK	G2	FTDI (U8) - ADBUS0
JTAGEN	E5	Dip S1-4

#### JTAG pins connection

JTAG access to the Trenz 4x5 module is through B2B connector JB2.

JTAG Signal	MAX10 Pin Bank5, U6	B2B Connector
M_TMS	L12	JB2-94
M_TDI	L13	JB2-96
M_TDO	J10	JB2-100
M_TCK	H8	JB2-98
VCCJTAG	J11, J12	JB2-92

#### JTAG pins connection

## SD Card socket

The TEB0707 is equipped with an Micro SD Card slot, J8. For levelshifting an IO Expander (U4) is used.

Pin	Schematic	Connected to	Notes
DAT0...3	ESD_DAT0...3	B2B, JB1	Through IO Expander, U4
CMD	ESD_CMD	B2B, JB1	Through IO Expander, U4
VDD	3.3V_SD	B2B, JB1	Through IO Expander, U4

CLK	ESD_CLK	B2B, JB1	Through IO Expander, U4
DLT	SD_CD	FPGA Bank 3, U6	Card detect.

#### USB2.0 Socket information

## Micro USB2.0 Socket

There is a micro USB2.0 Socket, J15 provided in order to communicate with the FTDI, U8.

Pin	Schematic	Connected to	Notes
D+	O2-D_P	B2B, JB3	Through Line Filter, L4
D-	O2-D_N	B2B, JB3	Through Line Filter, L4
Vbus	VBUS	B2B, JB3	

#### Micro USB2.0 Socket information

## USB A Socket

The SoM USB 2.0 signals are routed to a USB A socket (host).

Pin	Schematic	Connected to	Notes
Data+	O2-D_P	B2B, JB3	Through Line Filter, L1
Data-	O2-D_N	B2B, JB3	Through Line Filter, L1
VCC	USB_VBUS	B2B, JB3	

#### USB A Socket information

## RJ45 LAN Socket

There is a RJ45 Ethernet LAN MagJack, J2 connected to B2B, JB1.

Pin	Schematic	Connected to	Notes
2	PHY_MDI0_P	B2B, JB1	
3	PHY_MDI0_N	B2B, JB1	
4	PHY_MDI1_P	B2B, JB1	
5	PHY_MDI1_N	B2B, JB1	
6	PHY_MDI2_P	B2B, JB1	
7	PHY_MDI2_N	B2B, JB1	
8	PHY_MDI3_P	B2B, JB1	
9	PHY_MDI3_N	B2B, JB1	
VCC	ETH-VCC	B2B, JB1	
Green LED	ETH1_LED0	Intel MAX 10, U6	MAX10 Firmware dependent
Yellow LED	ETH1_LED1	Intel MAX 10, U6	MAX10 Firmware dependent

#### RJ45 LAN Socket information

## Jumpers



There are three Jumpers provided to choose the CRUVI Extension power voltage.

Designator	Schematic	Connected to	Notes
J14	VCCIO_CC	B2B, JB2	CRUVI C
J16	VCCIO_CB	B2B, JB2	CRUVI B
J17	VCCIO_CA	B2B, JB2	CRUVI A

**Jumpers information**

## Pin Header

Designator	Schematic	Connected to	Notes
J3	VBAT	B2B, JB1	

**Jumpers information**

## Test Points

Test Point	Signal	Connected to	Notes
TP1	3.3V	Regulator, U1	
TP2	VIN	Voltage Protection, U2	
TP4	IOV	Regulator, U3	
TP5	3.3V	Power Switch, Q1	
TP6	C5VIN	Power Switch, Q2	

**Test Points Information**

## On-board Peripherals

Chip/Interface	Designator	Notes
<a href="#">Intel MAX 10</a>	U6	
<a href="#">FTDI</a>	U8	
<a href="#">TEB0707 TRM#EEPROM</a>	U10	FTDI, programmed with Xilinx licence
<a href="#">Oscillator</a>	U7	
<a href="#">TEB0707 TRM#LEDs</a>	D1...8	
<a href="#">DIP Switch</a>	S1	
<a href="#">Push Buttons</a>	S2, S3	

**On board peripherals**

## Intel Max10 CPLD

The TEB0707 is equipped with an Intel Max10 as CPLD used for levelshifting of 3.3V signals on CRUVI connectors, JTAG/UART forward to modules, Module control pis, power sequencing and IO voltage selection along with providing User Push buttons, LEDs and switches. For complete information, please see the [TEB0707 MAX10 CPLD](#).

## FTDI FT2232H

The FTDI chip (U8) converts signals from USB2 to variety of standard serial and parallel interfaces. Refer to the FTDI [data sheet](#) to get information about the capacity of the FT2232H chip which is used in Multi-Protocol Synchronous Serial Engine (MPPSE) mode for JTAG.

The configuration of FTDI FT2232H chip is pre-programmed on the EEPROM U10.

Pin	Schematic	Connected to	Notes
ADBUS0	TCK	FPGA Bank 1B, U6	JTAG interface
ADBUS1	TDI	FPGA Bank 1B, U6	
ADBUS2	TDO	FPGA Bank 1B, U6	
ADBUS3	TMS	FPGA Bank 1B, U6	
BDBUS0	F_UART_TX	FPGA Bank 1B, U6	UART Transmitter output
BDBUS1	F_UART_RX	FPGA Bank 1B, U6	UART Receiver Input
OSCI	OSCI	Oscillator, U7	Clock 12 MHz
EECS	EECS	EEPROM, U10	EEPROM Contains FTDI configuration
EECLK	EECLK	EEPROM, U10	
EEDATA	EEDATA	EEPROM, U10	
DM/DP	FD_N/ FD_P	Micro USB, J15	USB to UART
nRESET	3.3V	3.3V	

FTDI chip interfaces and pins

## LEDs

The functions of the LEDs are MAX10 Firmware dependent. See [TEB0707 MAX10 CPLD LEDs](#).

Designator	Color	Schematic	Connected to	Active Level	Note
D1	green	LED3	FPGA Bank 8	Active High	
D2	green	LED5	FPGA Bank 8	Active High	
D3	green	LED7	FPGA Bank 8	Active High	
D4	red	LED4	FPGA Bank 3	Active High	
D5	red	LED6	FPGA Bank 2	Active High	
D6	red	LED8	FPGA Bank 8	Active High	
D7	red	LED2	FPGA Bank 3	Active High	
D8	green	LED1	FPGA Bank 3	Active High	

On-board LEDs

## EEPROM

The EEPROM IC, U8 contains the FTDI configuration and is prprogrammed with Xilinx JTAG licence.

Pin	Schematic	Connected to	Notes
-----	-----------	--------------	-------

CS	EECS	FTDI, U8	
CLK	EECLK	FTDI, U8	
DIN	EEDATA	FTDI, U8	

**I2C EEPROM interface MIOs and pins**

## DIP Switch

There is a DIP Switch provided for user controlling of settings. Dip1..3 are connected to MAX10 CPLD and therefore function is Firmware dependent, see [T EB0707 MAX10 Dips](#).

Pin	Schematic	Function (in standard Firmware)	Notes
DIP1	DIP1	Forwarded to IO so SoM	MAX10 firmware dependent.
DIP2	DIP2	IO Voltage selection	1.8V ('high', open, OFF), 2.5V ('low', closed, ON)
DIP3	DIP3 (PROGMODE)	Programming mode (JTAG selection on Trenz 4x5 module)	Select between FPGA/SoC (high, open, OFF ) or CPLD (low, closed, ON), MAX10 firmware dependent.
DIP4	JTAGEN	JTAG Selection	JTAG mode between CPLD (high, closed, ON) or SoM (low, open, OFF)

**DIP Switch connections**

## Push Buttons

Buttons are connected MAX10 CPLD and therefore function is Firmware dependent, see [TEB0707 MAX10 CPLD Buttons](#)

Designator	Schematic	Function (in standard Firmware)	Notes
S2	RESET	SoM Reset	Hardware debounced.
S3	BUTTON1	User Button	debounced in Max10 FPGA

**Push Buttons informations**

## Clock Sources

MEMS U7 Oscillator is needed for FTDI. It is additionally connectd to MAX 10 FPGA Bank 2 Pin H4 and can be used in custom Firmware.

Designator	Description	Frequency	Note
U7	MEMS Oscillator	12 MHz	

**Osillators**

## Power and Power-On Sequence

### Power Supply

Power supply with minimum current capability of 3 A for system startup is recommended.

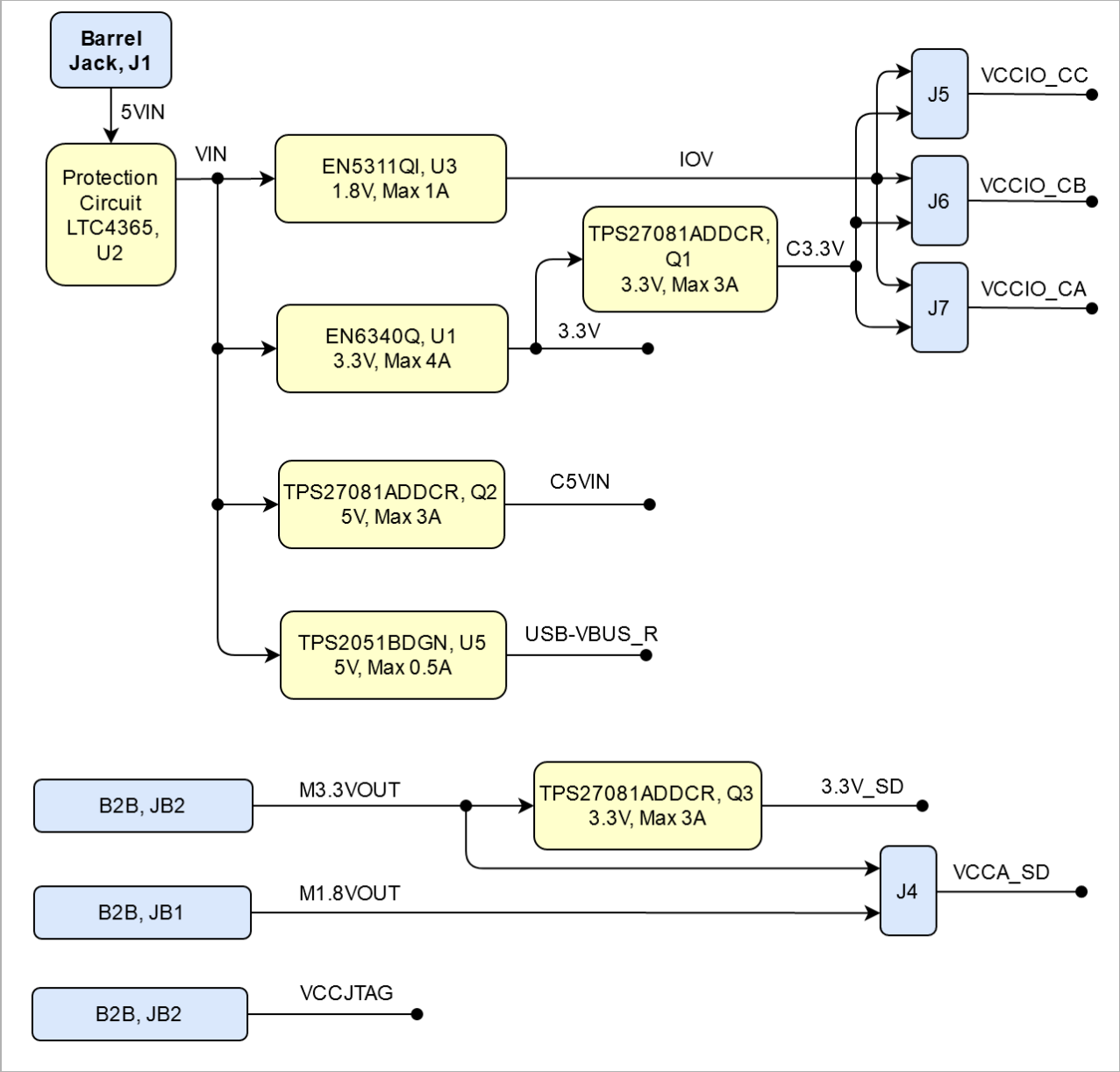
### Power Consumption

Power Input Pin	Typical Current
VIN	TBD*

Power Consumption

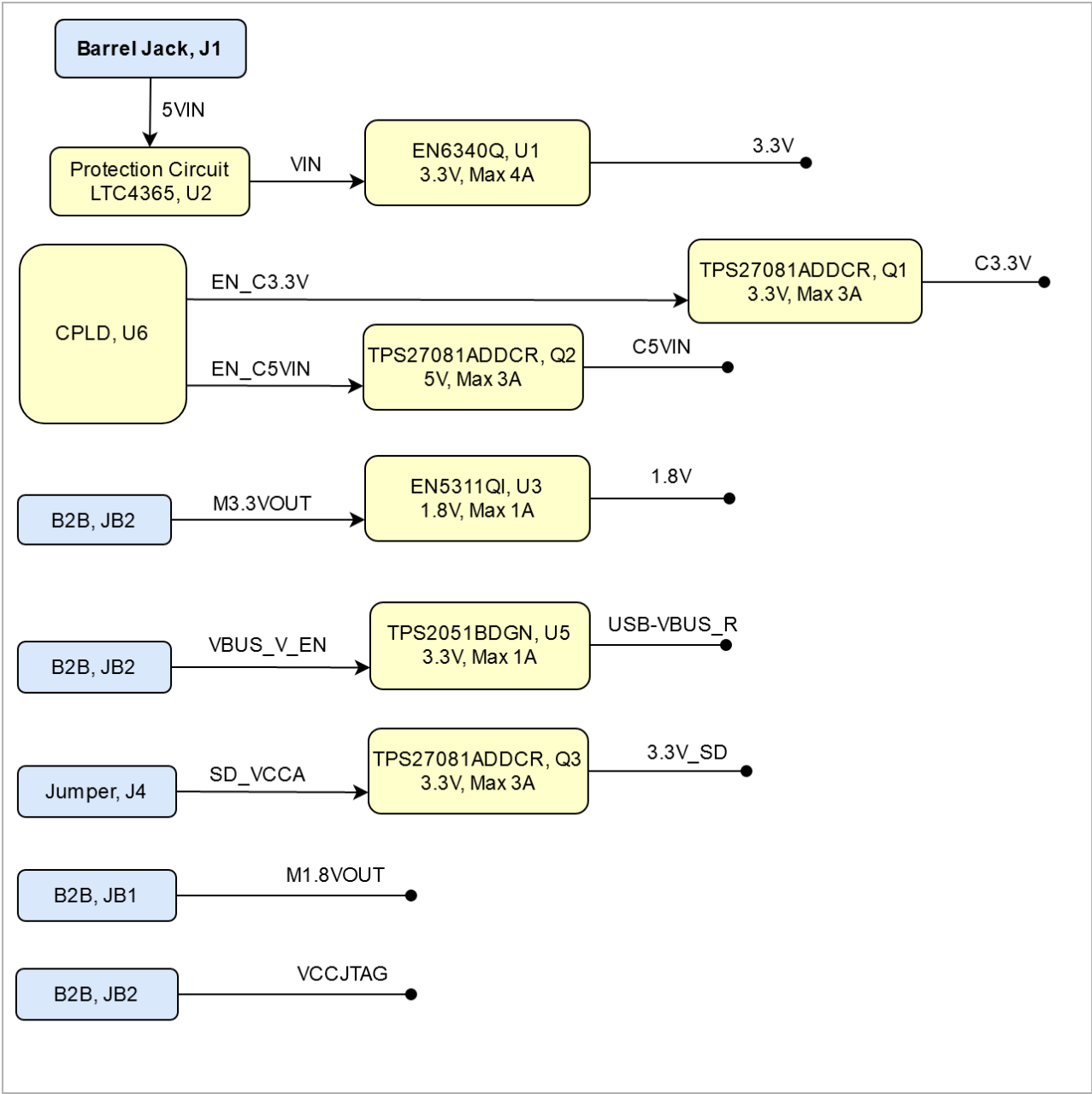
\* TBD - To Be Determined

Power Distribution Dependencies



Power Distribution

Power-On Sequence



Power Sequency

Power Rails

Power Rail Name	B2B Connector JB1 Pin	B2B Connector JB2 Pin	B2B Connector JB3 Pin	Direction	Notes

VCCIO_CA	-	8, 10	-	Output	
VCCIO_CB	-	2, 4, 6	-	Output	
VCCIO_CC	10, 12	-	-	Output	
3.3V	14, 16	-	-	Output	
M1.8VOUT	40	-	-	Input	
M3.3VOUT	-	9, 11	-	Input	
ETH-VCC	13	-	-	Input	

Module power rails.


## Bank Voltages

Below MAX10 CPLD Bankvoltages are summarized.

Bank	Schematic Name	Voltage	Notes
Bank 1A	3.3V	3.3V	
Bank 1B	3.3V	3.3V	
Bank 2	3.3V	3.3V	
Bank 3	3.3V	3.3V	
Bank 5	VCCJTAG		from SoM
Bank 6	VCCIO_CC		Variable
Bank 8	3.3V	3.3V	

Zynq SoC bank voltages.

## Board to Board Connectors

 These connectors are hermaphroditic. Odd pin numbers on the module are connected to even pin numbers on the baseboard and vice versa.

4 x 5 modules use two or three [Samtec Razor Beam LSHM connectors](#) on the bottom side.

- 2 x REF-189016-02 (compatible to LSHM-150-04.0-L-DV-A-S-K-TR), (100 pins, "50" per row)
- 1 x REF-189017-02 (compatible to LSHM-130-04.0-L-DV-A-S-K-TR), (60 pins, "30" per row) (depending on module)

### Connector Mating height

When using the same type on baseboard, the mating height is 8mm. Other mating heights are possible by using connectors with a different height

Order number	Connector on baseboard	compatible to	Mating height
23836	REF-189016-01	LSHM-150-02.5-L-DV-A-S-K-TR	6.5 mm
	LSHM-150-03.0-L-DV-A-S-K-TR	LSHM-150-03.0-L-DV-A-S-K-TR	7.0 mm
23838	REF-189016-02	LSHM-150-04.0-L-DV-A-S-K-TR	8.0 mm
	LSHM-150-06.0-L-DV-A-S-K-TR	LSHM-150-06.0-L-DV-A-S-K-TR	10.0mm
26125	REF-189017-01	LSHM-130-02.5-L-DV-A-S-K-TR	6.5 mm

	LSHM-130-03.0-L-DV-A-S-K-TR	LSHM-130-03.0-L-DV-A-S-K-TR	7.0 mm
24903	REF-189017-02	LSHM-130-04.0-L-DV-A-S-K-TR	8.0 mm
	LSHM-130-06.0-L-DV-A-S-K-TR	LSHM-130-06.0-L-DV-A-S-K-TR	10.0mm

#### Connectors.

The module can be manufactured using other connectors upon request.

#### Connector Speed Ratings

The LSHM connector speed rating depends on the stacking height; please see the following table:

Stacking height	Speed rating
12 mm, Single-Ended	7.5 GHz / 15 Gbps
12 mm, Differential	6.5 GHz / 13 Gbps
5 mm, Single-Ended	11.5 GHz / 23 Gbps
5 mm, Differential	7.0 GHz / 14 Gbps

#### Speed rating.

#### Current Rating

Current rating of Samtec Razor Beam™ LSHM B2B connectors is 2.0A per pin (2 adjacent pins powered).

#### Connector Mechanical Ratings

- Shock: 100G, 6 ms Sine
- Vibration: 7.5G random, 2 hours per axis, 3 axes total

#### Manufacturer Documentation

File	Modified
PDF File hsc-report_lshm-lshm-05mm_web.pdf High speed test report	07 04, 2016 by Thorsten Trenz
PDF File lshm_dv.pdf LSHM catalog page	07 04, 2016 by Thorsten Trenz
PDF File LSHM-1XX-XX.X-X-DV-A-X-X-TR-FOOTPRINT(1).pdf Recommended layout and stencil drawing	07 04, 2016 by Thorsten Trenz
PDF File LSHM-1XX-XX.X-XX-DV-A-X-X-TR-MKT.pdf Technical drawing	07 04, 2016 by Thorsten Trenz
PDF File REF-189016-01.pdf Technical Drawing	07 04, 2016 by Thorsten Trenz
PDF File REF-189016-02.pdf Technical Drawing	07 04, 2016 by Thorsten Trenz
PDF File REF-189017-01.pdf Technical Drawing	07 04, 2016 by Thorsten Trenz
PDF File REF-189017-02.pdf Technical Drawing	07 04, 2016 by Thorsten Trenz
PDF File TC0923--2523_report_Rev_2_qua.pdf Design qualification test report	07 04, 2016 by Thorsten Trenz
PDF File tc0929--2611_qua(1).pdf Shock and vibration report	07 04, 2016 by Thorsten Trenz

[Download All](#)

# CRUVI Connectors

CRUVI modules use on bottom side:

- TMMH-106-04-F-DV-A-M as Low Speed connectors, (12 pins, 6 per row)
- ST4-30-1.50-L-D as High Speed connectors, (60 pins, 30 per row)

CRUVI carrier use on top side:

- CLT-106-02-F-D-A-K as Low Speed connectors , (12 pins, 6 per row)
- SS4-30-3.50-L-D as High Speed connectors, (60 pins, 30 per row)

## Connector Mating height

Mating height of the high speed connectors is 5mm. The low speed connectors mate correctly within a range from 4.78 mm to 5.29 mm.

## Current Rating

Current rating of High Speed B2B connectors is 1.6A per pin (2 pins powered).

Current rating of Low Speed B2B connectors is 4.1A per pin (2 pins powered).

## Speed Rating

There is no data available for the connectors actual used here. Data available for other stacking heights of same connectors is summarized in the following table:

Connector	Speed ratings
ST4/SS4 single ended (4mm stacking height!)	13.5GHz / 27 Gbps
ST4/SS4 differential (4mm stacking height!)	15.5 GHz / 31 Gbps
TMMH/CLT single ended (4.77mm stacking height!)	5.5GHz / 11 Gbps

### Connector speed ratings

## Operating Temp Range

All connectors are specified for a temp. range of -55 °C to 125 °C.

# Technical Specifications

## Absolute Maximum Ratings

Symbols	Description	Min	Max	Unit
5VIN	Input supply Voltage	-40	60	V
T_STG	Storage Temperature	-40	85	°C

### PS absolute maximum ratings



# Recommended Operating Conditions

Operating temperature range depends also on customer design and cooling solution. Please contact us for options.

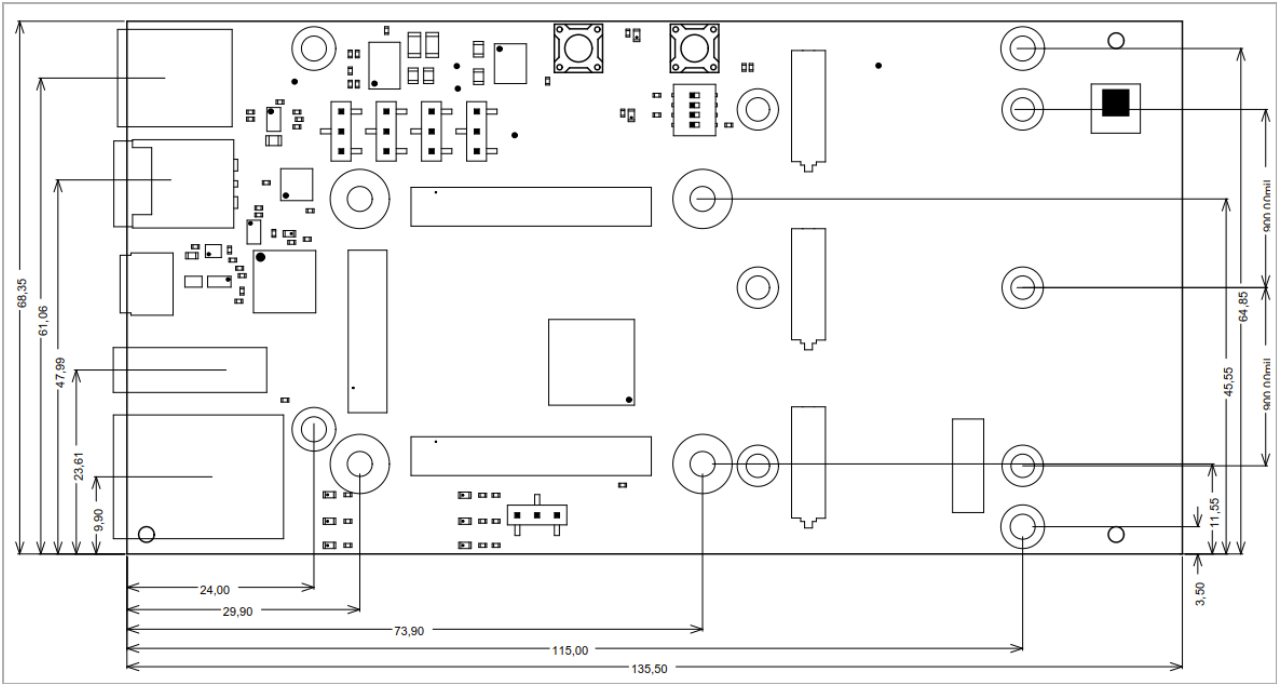
Parameter	Min	Max	Units	Reference Document
Input supply Voltage	4.06	5.58	V	See the OV/UV in the carrier datasheets.
T_OPT	0	70	°C	See Push Button datasheet.

Recommended operating conditions.

# Physical Dimensions

- Module size: 135 mm x 68 mm. Please download the assembly diagram for exact numbers.
- Mating height with standard connectors: 4 mm.

PCB thickness: 1.7 mm.



Physical Dimension

# Currently Offered Variants

Trenz shop TEB0707 overview page	
<a href="#">English page</a>	<a href="#">German page</a>

Trenz Electronic Shop Overview

# Revision History

## Hardware Revision History

Date	Revision	Changes	Documentation Link
2020-11-20	REV02	first production release	REV02
2020-04-01	REV01	Prototypes	-

### Hardware Revision History

Hardware revision number can be found on the PCB board together with the module model number separated by the dash.



Board hardware revision number.

## Document Change History

Date	Revision	Contributor	Description
------	----------	-------------	-------------

<div><div><div>Error rendering macro 'page-info'</div><div>Ambiguous method overloading for method jdk.proxy279.\$Proxy4022#hasContentLevelPermission. Cannot resolve which method to invoke for [null, class java.lang.String, class com.atlassian.confluence.pages.Page] due to overlapping prototypes between: [interface com.atlassian.confluence.user.ConfluenceUser, class java.lang.String, class com.atlassian.confluence.core.ContentEntityObject] [interface com.atlassian.user.User, class java.lang.String, class com.atlassian.confluence.core.ContentEntityObject]</div></div></div>	<div><div><div>Error rendering macro 'page-info'</div><div>Ambiguous method overloading for method jdk.proxy279.\$Proxy4022#hasContentLevelPermission. Cannot resolve which method to invoke for [null, class java.lang.String, class com.atlassian.confluence.pages.Page] due to overlapping prototypes between: [interface com.atlassian.confluence.user.ConfluenceUser, class java.lang.String, class com.atlassian.confluence.core.ContentEntityObject] [interface com.atlassian.user.User, class java.lang.String, class com.atlassian.confluence.core.ContentEntityObject]</div></div></div>	<div><div><div>Error rendering macro 'page-info'</div><div>Ambiguous method overloading for method jdk.proxy279.\$Proxy4022#hasContentLevelPermission. Cannot resolve which method to invoke for [null, class java.lang.String, class com.atlassian.confluence.pages.Page] due to overlapping prototypes between: [interface com.atlassian.confluence.user.ConfluenceUser, class java.lang.String, class com.atlassian.confluence.core.ContentEntityObject] [interface com.atlassian.user.User, class java.lang.String, class com.atlassian.confluence.core.ContentEntityObject]</div></div></div>	<div><div><div>Initial Reslease</div></div></div>
--	--	--	---

--	all	<div><div>Error rendering macro 'page-info'</div><div>Ambiguous method overloading for method jdk.proxy279.\$Proxy4022#hasContentLevelPermission. Cannot resolve which method to invoke for [null, class java.lang.String, class com.atlassian.confluence.pages.Page] due to overlapping prototypes between: [interface com.atlassian.confluence.user.ConfluenceUser, class java.lang.String, class com.atlassian.confluence.core.ContentEntityObject] [interface com.atlassian.user.User, class java.lang.String, class com.atlassian.confluence.core.ContentEntityObject]</div></div>	• --
----	-----	---	------

Document change history.

Disclaimer

Data Privacy

Please also note our data protection declaration at <https://www.trenz-electronic.de/en/Data-protection-Privacy>

Document Warranty

The material contained in this document is provided "as is" and is subject to being changed at any time without notice. Trenz Electronic does not warrant the accuracy and completeness of the materials in this document. Further, to the maximum extent permitted by applicable law, Trenz Electronic disclaims all warranties, either express or implied, with regard to this document and any information contained herein, including but not limited to the implied warranties of merchantability, fitness for a particular purpose or non infringement of intellectual property. Trenz Electronic shall not be liable for errors or for incidental or consequential damages in connection with the furnishing, use, or performance of this document or of any information contained herein.

Limitation of Liability

In no event will Trenz Electronic, its suppliers, or other third parties mentioned in this document be liable for any damages whatsoever (including, without limitation, those resulting from lost profits, lost data or business interruption) arising out of the use, inability to use, or the results of use of this document, any documents linked to this document, or the materials or information contained at any or all such documents. If your use of the materials or information from this document results in the need for servicing, repair or correction of equipment or data, you assume all costs thereof.

## Copyright Notice

No part of this manual may be reproduced in any form or by any means (including electronic storage and retrieval or translation into a foreign language) without prior agreement and written consent from Trenz Electronic.

## Technology Licenses

The hardware / firmware / software described in this document are furnished under a license and may be used /modified / copied only in accordance with the terms of such license.

## Environmental Protection

To confront directly with the responsibility toward the environment, the global community and eventually also oneself. Such a resolution should be integral part not only of everybody's life. Also enterprises shall be conscious of their social responsibility and contribute to the preservation of our common living space. That is why Trenz Electronic invests in the protection of our Environment.

## REACH, RoHS and WEEE

### REACH

Trenz Electronic is a manufacturer and a distributor of electronic products. It is therefore a so called downstream user in the sense of [REACH](#). The products we supply to you are solely non-chemical products (goods). Moreover and under normal and reasonably foreseeable circumstances of application, the goods supplied to you shall not release any substance. For that, Trenz Electronic is obliged to neither register nor to provide safety data sheet. According to present knowledge and to best of our knowledge, no [SVHC \(Substances of Very High Concern\) on the Candidate List](#) are contained in our products. Furthermore, we will immediately and unsolicited inform our customers in compliance with REACH - Article 33 if any substance present in our goods (above a concentration of 0,1 % weight by weight) will be classified as SVHC by the [European Chemicals Agency \(ECHA\)](#).

### RoHS

Trenz Electronic GmbH herewith declares that all its products are developed, manufactured and distributed RoHS compliant.

### WEEE

Information for users within the European Union in accordance with Directive 2002/96/EC of the European Parliament and of the Council of 27 January 2003 on waste electrical and electronic equipment (WEEE).

Users of electrical and electronic equipment in private households are required not to dispose of waste electrical and electronic equipment as unsorted municipal waste and to collect such waste electrical and electronic equipment separately. By the 13 August 2005, Member States shall have ensured that systems are set up allowing final holders and distributors to return waste electrical and electronic equipment at least free of charge. Member States shall ensure the availability and accessibility of the necessary collection facilities. Separate collection is the precondition to ensure specific treatment and recycling of waste electrical and electronic equipment and is necessary to achieve the chosen level of protection of human health and the environment in the European Union. Consumers have to actively contribute to the success of such collection and the return of waste electrical and electronic equipment. Presence of hazardous substances in electrical and electronic equipment results in potential effects on the environment and human health. The symbol consisting of the crossed-out wheeled bin indicates separate collection for waste electrical and electronic equipment.

Trenz Electronic is registered under WEEE-Reg.-Nr. DE97922676.

Ambiguous method overloading for method `jdk.proxy279.$Proxy4022#hasContentLevelPermission`. Cannot resolve which method to invoke for `[null, class java.lang.String, class com.atlassian.confluence.pages.Page]` due to overlapping prototypes between: `[interface com.atlassian.confluence.user.ConfluenceUser, class java.lang.String, class com.atlassian.confluence.core.ContentEntityObject]` `[interface com.atlassian.user.User, class java.lang.String, class com.atlassian.confluence.core.ContentEntityObject]`