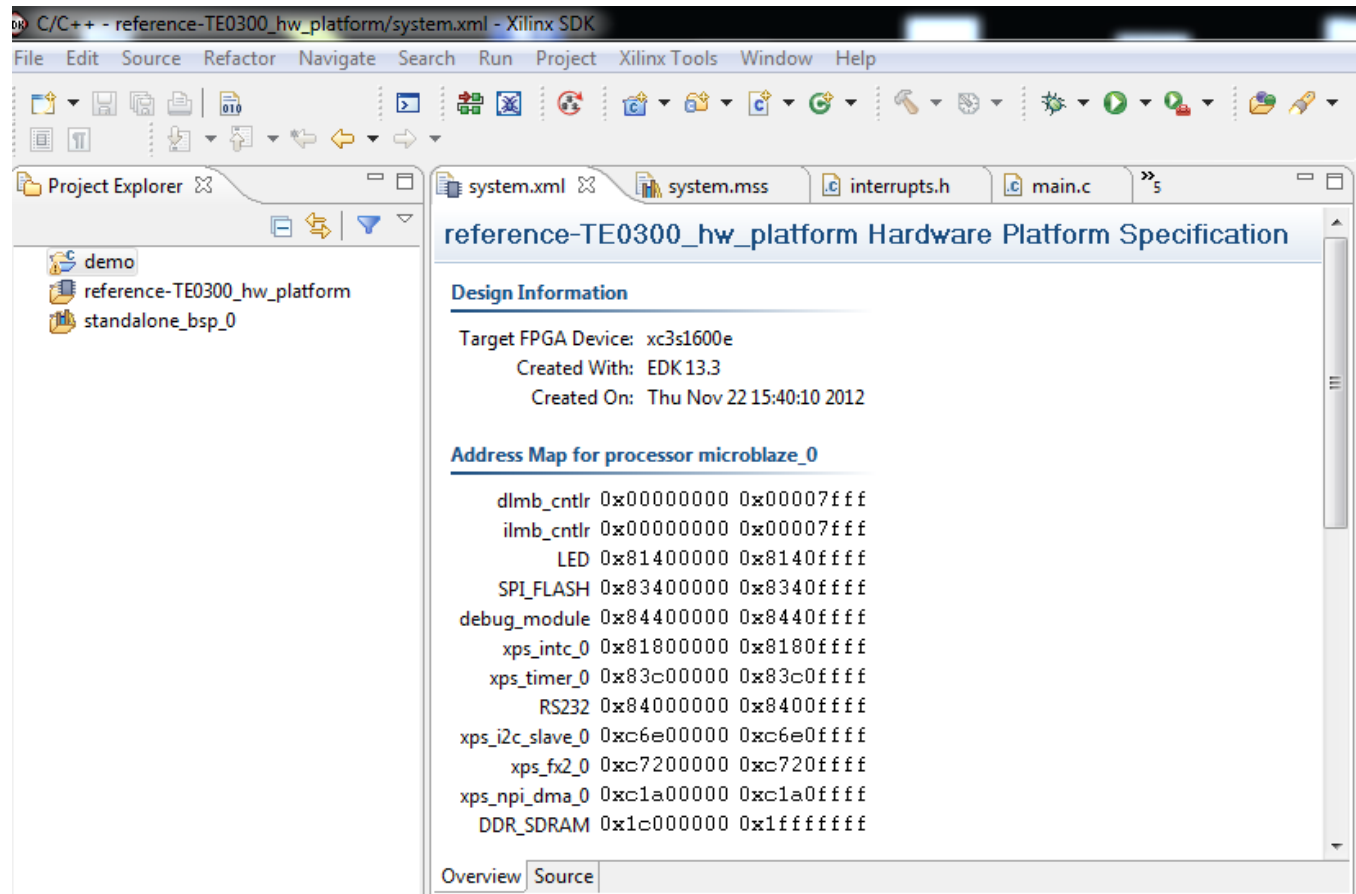
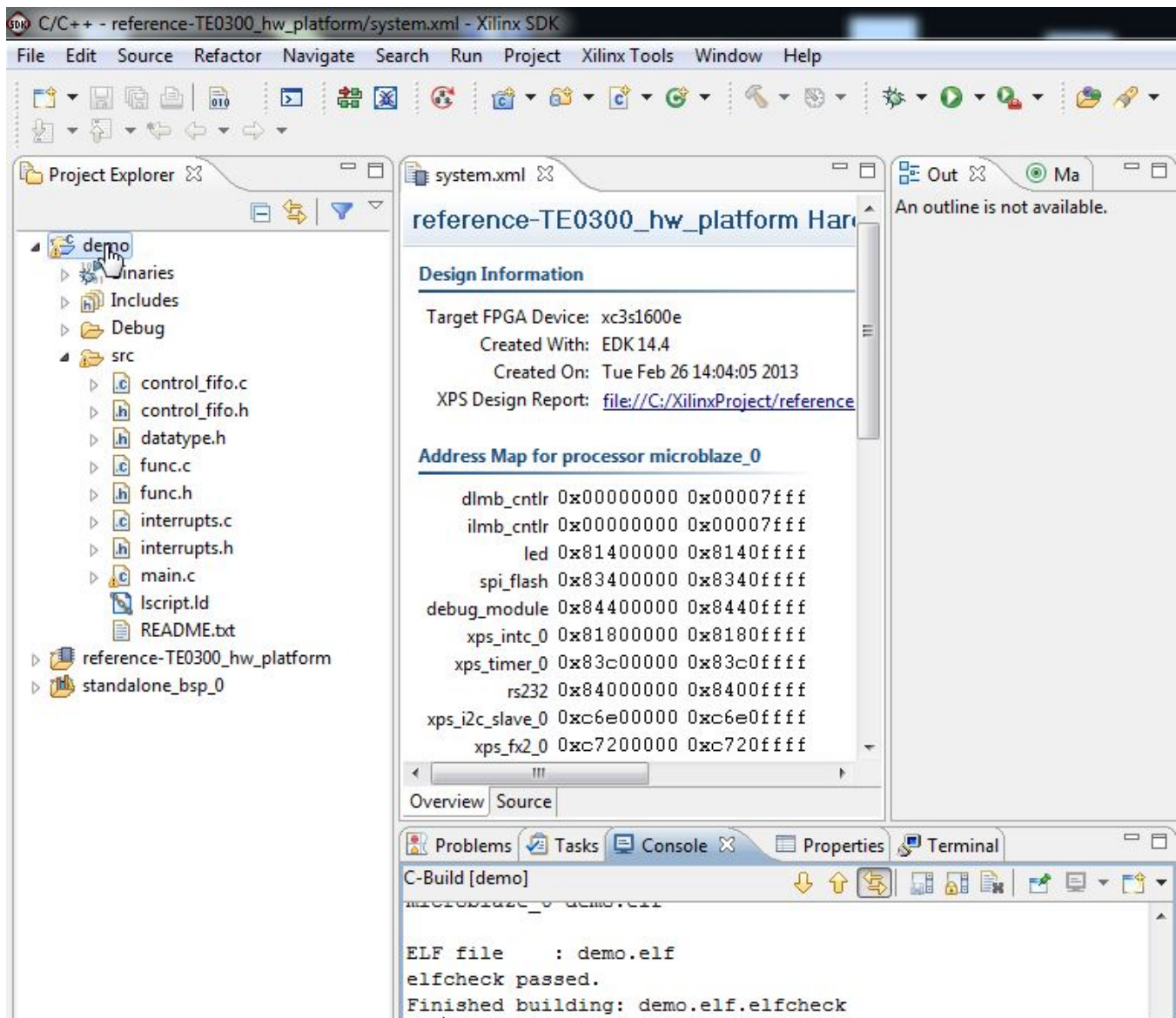


Generate a link script

You should click/select "demo" folder in "Project Explorer".

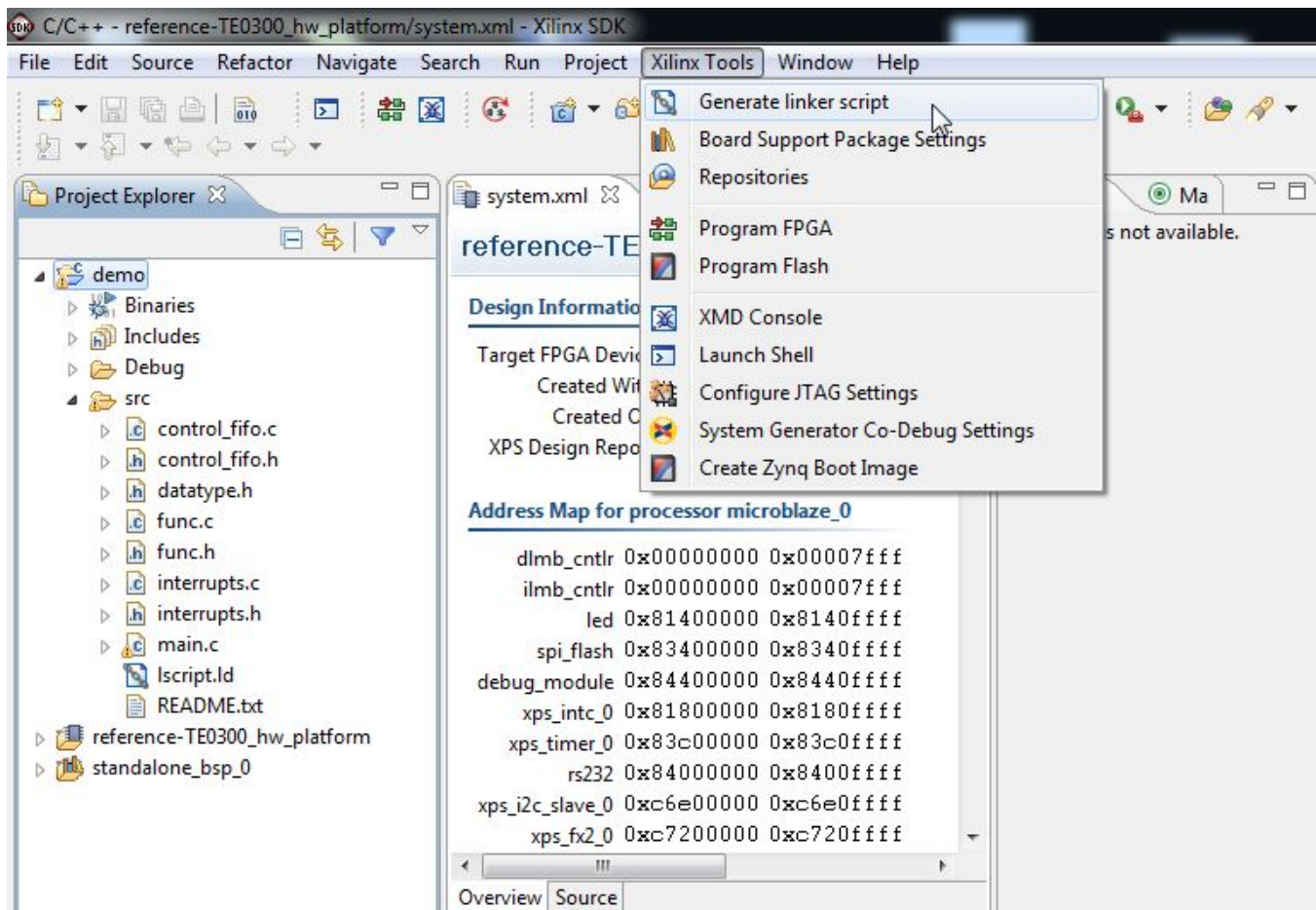


Click/select "demo" folder in "Project Explorer". Case A) Update the SDK Workspace: the Hardware reference is 'old' (13.3 in this image)



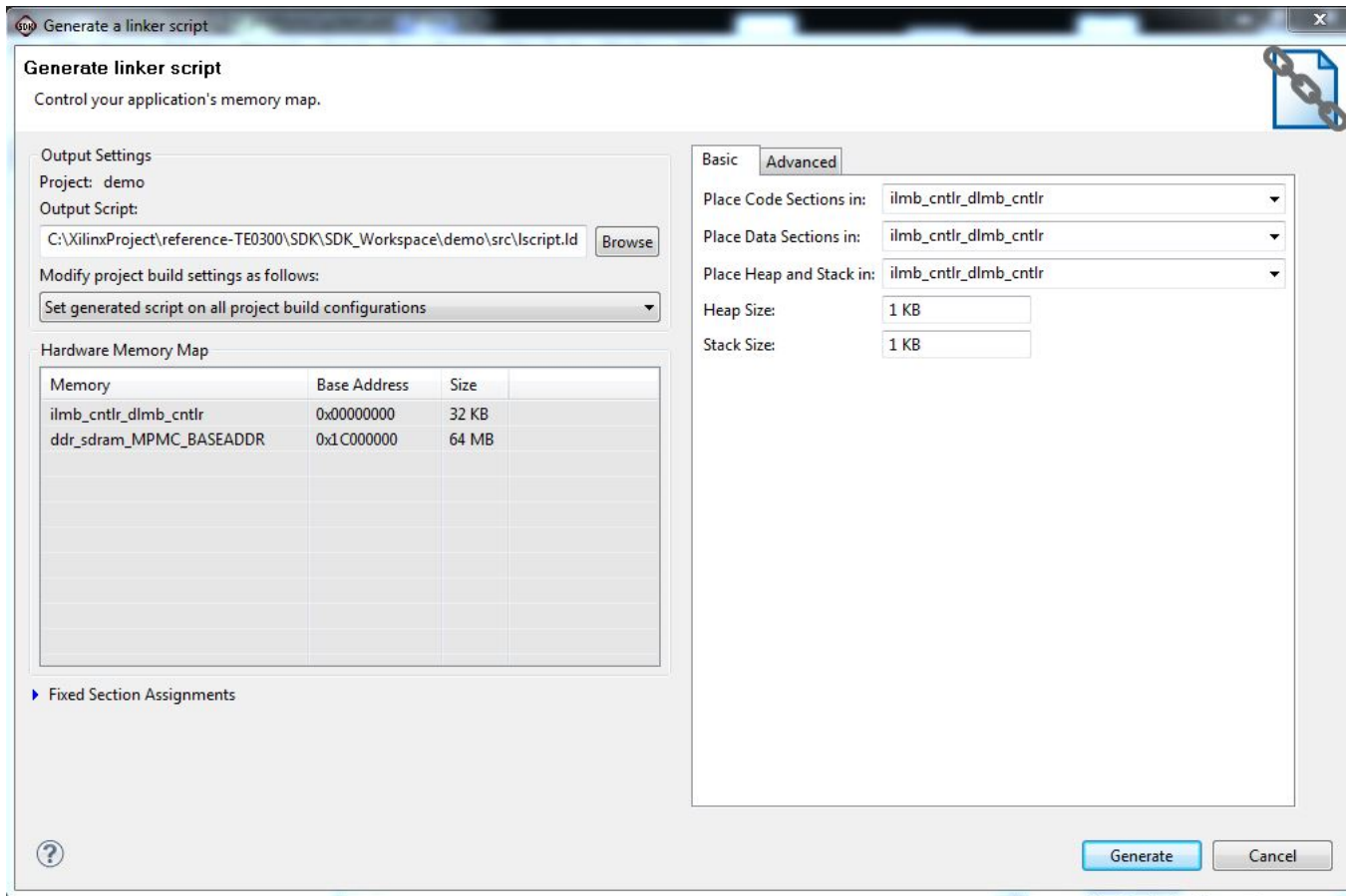
Click/select "demo" folder in "Project Explorer". Case B) Recreate the SDK Workspace: the Hardware reference is 'new' (14.4 in this image)

You should click "Xilinx Tools" and then click "Generate linker script".



Generate linker script for application project "demo"

A pop-up "Generate a linker script" will appear; you should click "Generate";



Generate a linker script

The pop-up will close and "lscript.ld" file will be (re)written in "src" subfolder of "demo".

After this, you should wait that building (compile and linking) procedure ends; "Finished Building: demo.elf.elfcheck" should appear in Console C-build [demo].