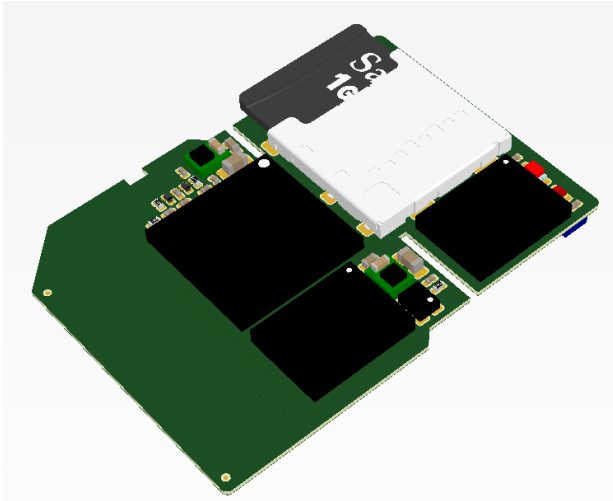


TE0748 FPGA SD-microSD



Features

- SD Card form factor
- Xilinx Artix FPGA A35T (optional: A50T)
- 32 MByte boot Flash (max 512 MByte)
- 8 MByte HyperRAM (max 32 MByte)

Memory solutions by Cypress

HyperRAM <http://www.cypress.com/products/hyperram-memory>

- MEMS Oscillator for system clock
- One User LED
- Ambient light and proximity sensor
- 10 pin debug and I/O connector
 - 1.8V supply and logic levels
 - JTAG (can also use as 3 input only pins)
 - 4 User I/O