

# Vivado Board Part Flow

## Table of Content

- [Table of Content](#)
- [Definition](#)
- [Usage](#)
  - [Installation](#)
    - [Overview](#)
    - [Option 1: Use Trenz Electronic Reference Design with local board part file](#)
    - [Option 2: Xilinx Git Hub for Vivado](#)
    - [Option 3: Install into a User Repository](#)
    - [Option 4: Install into the Vivado installation](#)
    - [Load on Vivado](#)
    - [Software Requirements](#)
  - [Zynq PS-Initialization \(7Series/UltraScale+\)](#)

## Definition

[TE Board Part Files](#)

## Usage

TE reference design scripts provide all necessary steps for a local board part installation and PS-Initialization. Reference Designs provide additional informations and instructions

General sescription of the reference design project delivery:

- [Project Delivery #QuickStart](#)
- [Project Delivery #Initialise TE-scripts on Vivado/LabTools](#)
- [Project Delivery #Block Design Conventions](#)

For manual Initialization use following description.

## Installation

### Overview

The Vivado® Design Suite allows you to create projects based on specific boards. Trenz Electronic provides Vivado Board Part files in the [download area](#). This files are included into the reference projects, please choose a reference design under the proper module.

There are three options for installing the Board Part files

- Option1: Use Trenz Electronic Reference Design with local board part file
- Option2: Xilinx Git Hub for Vivado
- Option3: Install into a User Repository
- Option4: Install into the Vivado installation

Attention: The board part files of our reference designs are for the corresponding Vivado version of the project delivery. It's possible to use them with other Vivado versions, but maybe it's not working correctly, if this is done.

### Option 1: Use Trenz Electronic Reference Design with local board part file



1. Download the reference design from the corresponding download area of the Trenz Electronic Product
2. Since 2018.3 special "Module Selection Guide" is included into "\_create\_win\_setup.cmd" and "\_create\_linux\_setup.sh"
3. Unzip download (use short directory name)
4. **Execute** "\_create\_win\_setup.cmd" or "\_create\_linux\_setup.sh" (depending on the used OS)
5. **Follow instruction on the console window**
  - a. (optional) Select Vivado Installation path and Version (will be possible in the expected version wasn't found on Xilinx installation path)
  - b. Console will show a list of available assembly versions (board files) for the reference design:

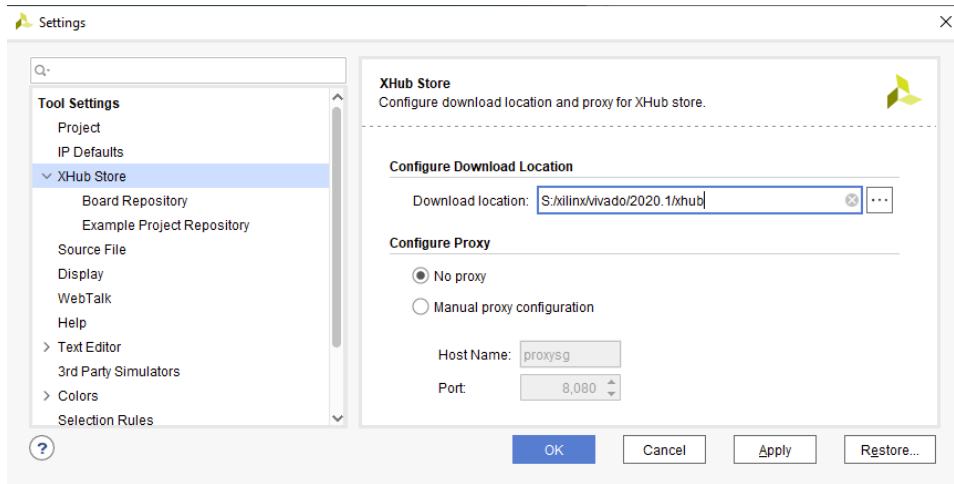
d. Verify selection and create project

Board Files for Trenz Electronic Modules will be available on Xilinx Git Hub store for Vivado 2020.1 and newer

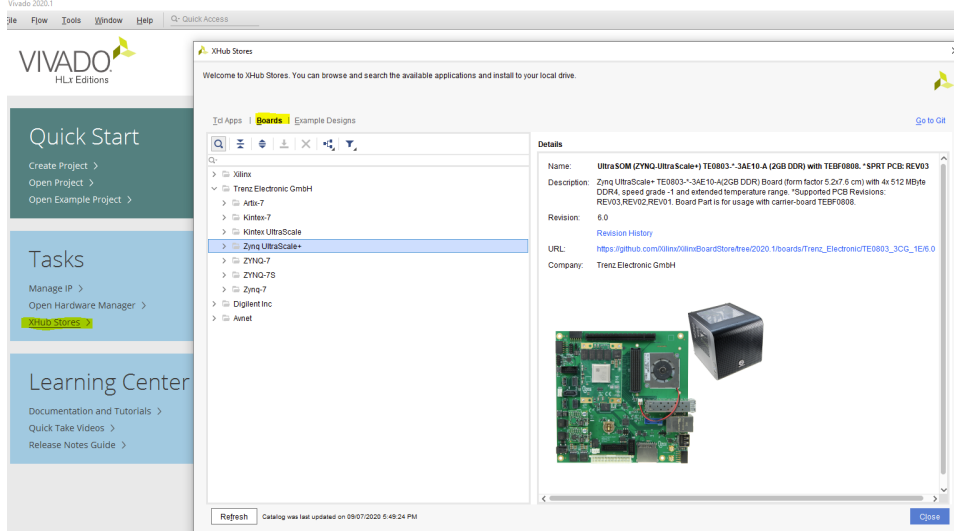
Xilinx Git Hub Link: <https://github.com/Xilinx/XilinxBoardStore>

- ## 1. Open Vivado

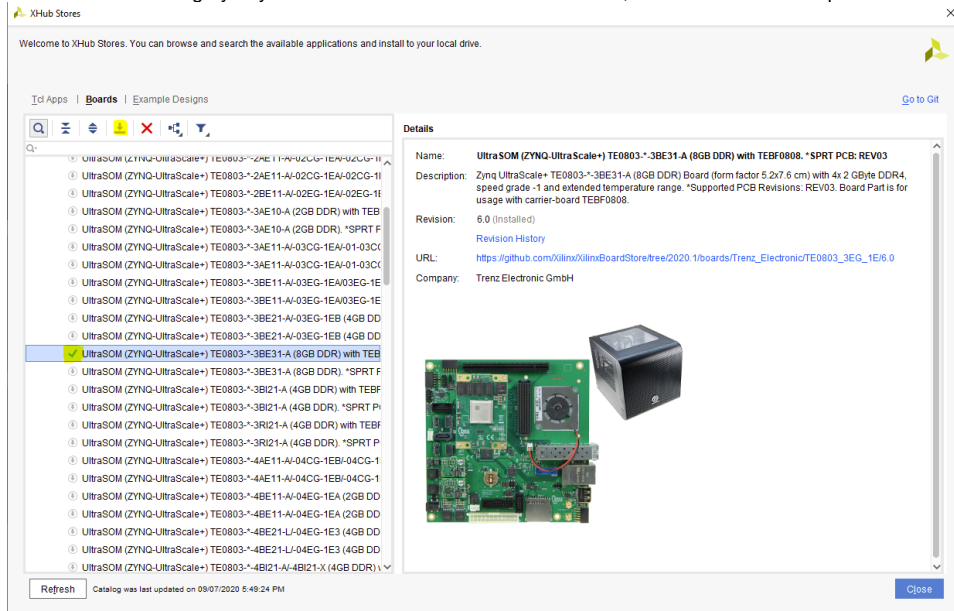
2. Select download path for Git Hub Store (got to Tools Settings):



3. Open XHub Store and select "Boards" Tab



- Go to the device category of your Trencz Electronic SoC/FPGA Module, select the device and press Download Button



- Installed Board files will be marked with the green check mark.

## Option 3: Install into a User Repository

This Option allows you to install the Vivado Board Part files to any location of your choosing. The disadvantage is that it required an additional command to point the tools to your repository.



This description is for Vivado 2015.1 and higher. Older Vivado versions used other variable names, so some changes are necessary.

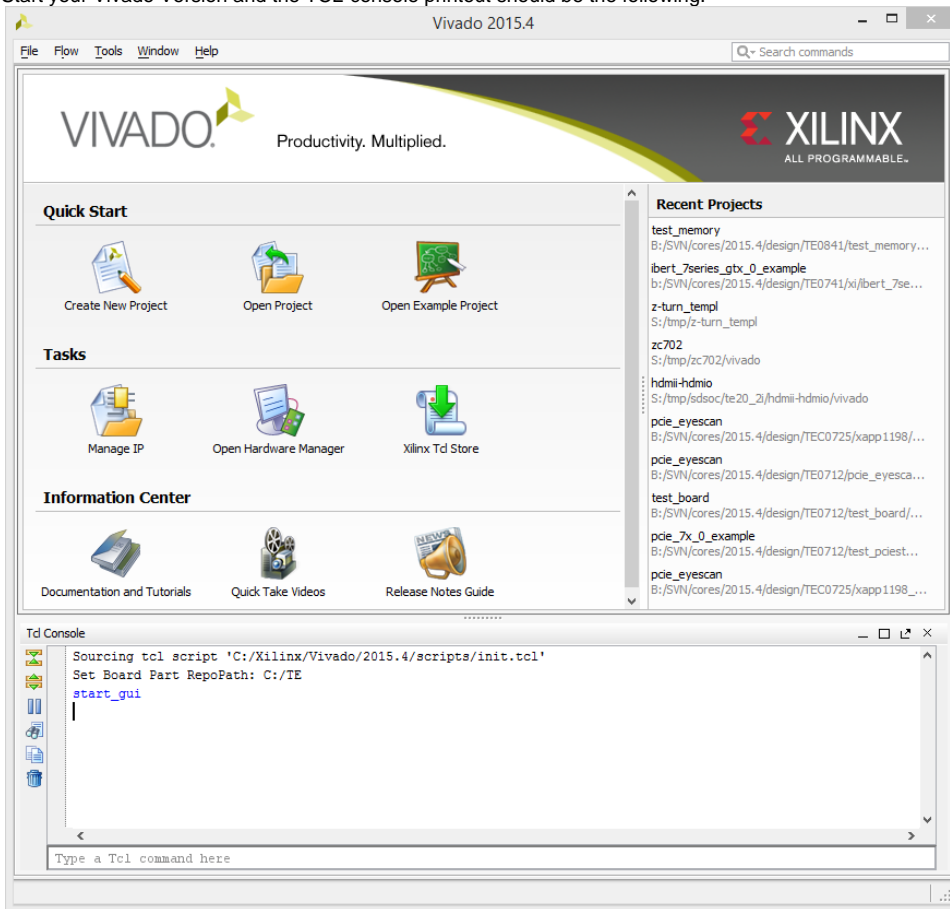
Since Vivado 2017.1, "init.tcl" should be renamed to "Vivado\_init.tcl"

- Create init.tcl with following content:

```
if { [catch {
# #####
# insert settings here:
set tepath "C:/TE"
if {[file exists ${tepath}/]} {
set_param board.repoPaths $tepath
puts "Set Board Part RepoPath: [get_param board.repoPaths]"
}
# #####
}] } {
puts "Info: (TE) init.tcl failed"
}
```

- Put init.tcl in one of the possible locations for init.tcl:
  - Vivado Project (For current version only): <install\_dir>/vivado/<version>/scripts/
  - User Data (For all versions): C:/Users/<user>/AppData/Roaming/Xilinx/Vivado/
- Copy the Board part files folder from the reference project (<reference\_design>/board\_files/) into the folder C:/TE (the folder location can be changed in the init.tcl script). The \*.csv file from <reference\_design>/board\_files/ is not necessary for this way.

4. Start your Vivado Version and the TCL-console printout should be the following:



Please make sure you use plain ASCII text editor when creating the init.tcl file, any non ASCII character in the file will make Vivado to freeze on startup.

A working init.tcl file is provided in the archive with this tutorial. With this method you can set up a permanent initialization TCL that is read by Vivado each time it launches. Details about the init.tcl file are included in UG835 Vivado Design Suite Tcl Command Reference Guide. UG835 describes where to put the init.tcl file.

## Option 4: Install into the Vivado installation

This is the quickest option, but it is not recommended by Xilinx. Use at your own risk.

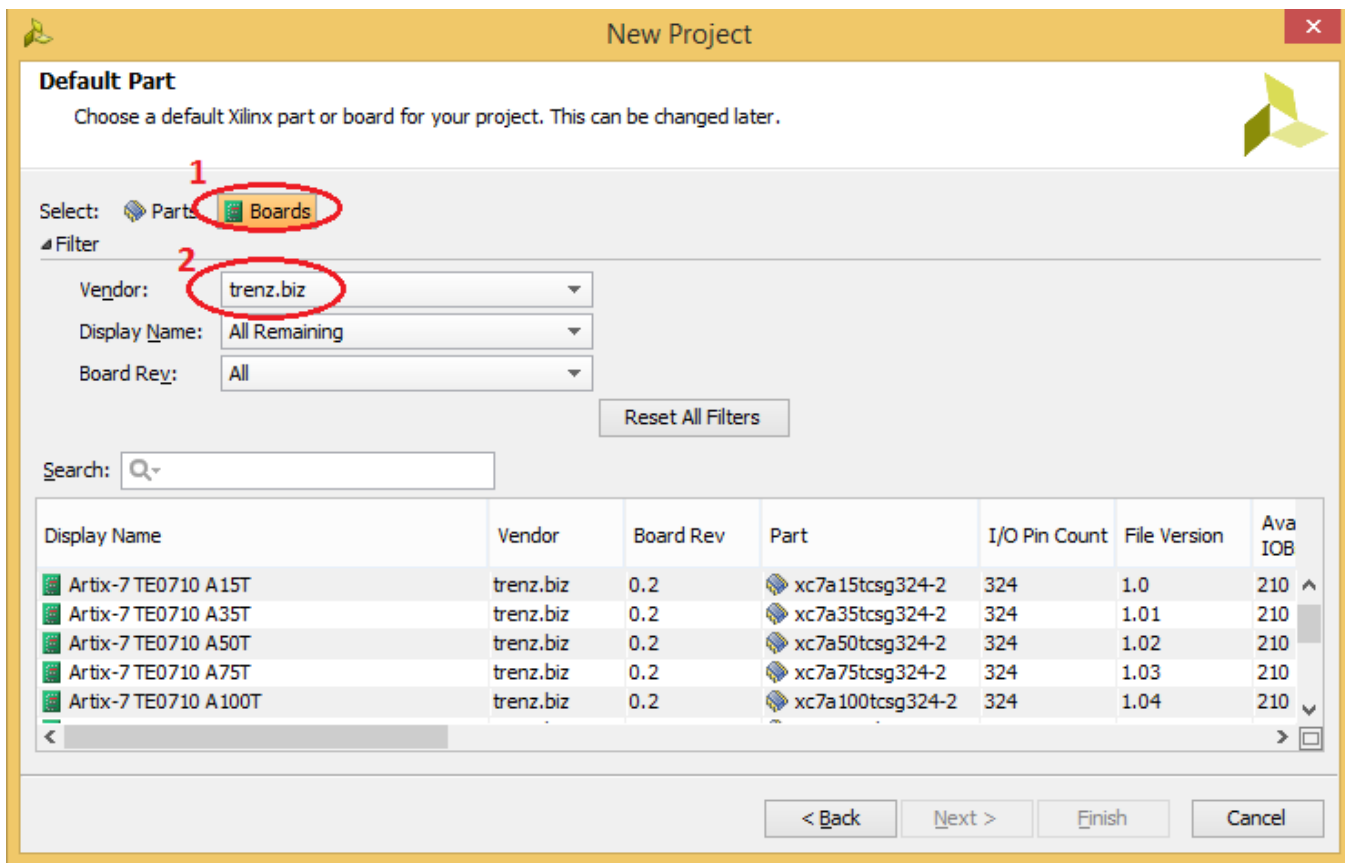
1. Copy the Board part files folder from the reference project (<reference\_design>/board\_files/) into the folder <install\_dir>/vivado/<version>/data/boards/board\_files/. Create this folder if it does not exist yet. The \*.csv file from <reference\_design>/board\_files/ is not necessary for this way.

## Load on Vivado

Regardless of which method you choose, the new boards should now be visible in Vivado 2015.1 or higher for vendor [trenz.biz](https://www.trenz.biz). To test this out, do the following.

1. Launch Vivado.
2. Select **Create New Project**.
3. Click **Next>** to get started.
4. Set the project name and location. Press **Next>**.
5. Select project type Click **Next>**.
6. At the **Default Part** screen,
  - a, Click **Boards** under Specify.
  - b, Click **trenz.biz** under Vendor.

The options should appear as shown.



For more information about this capability, please refer to the following Quick Take video.

- <http://www.xilinx.com/training/vivado/using-vivado-with-xilinx-evaluation-boards.htm>

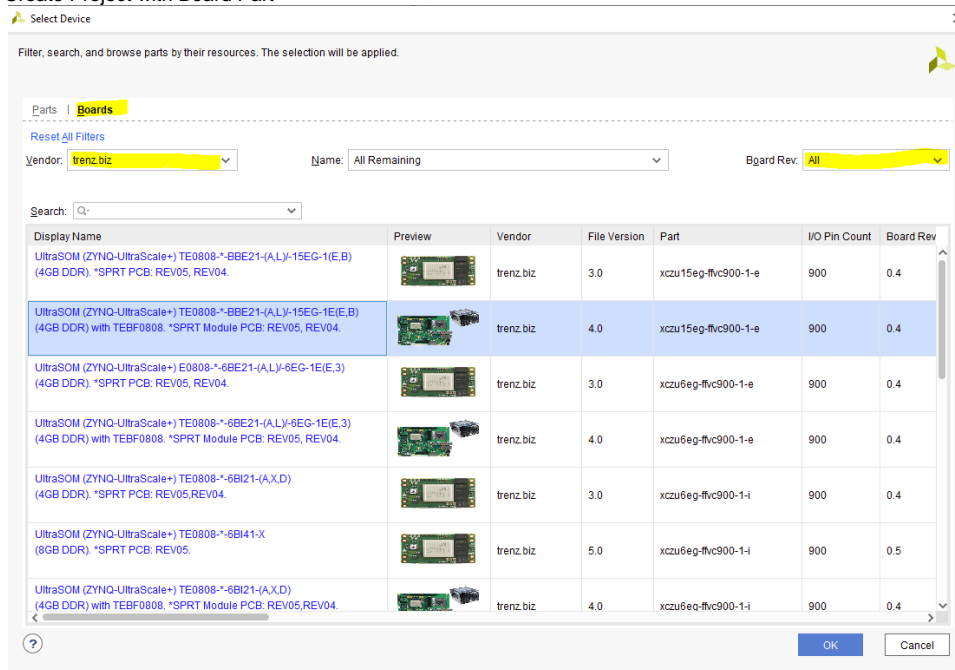
## Software Requirements

The software used is

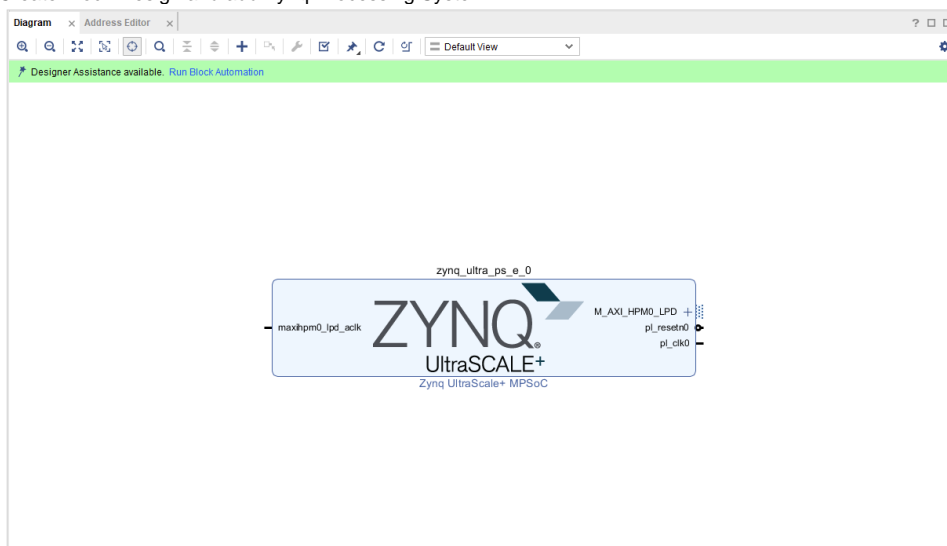
- Xilinx Vivado 2015.4 or higher ( for install option 1, 3, 4)
- Xilinx Vivado 2019.1.3 or higher ( for install option 1, 2, 3, 4)

## Zynq PS-Initialization (7Series/UltraScale+)

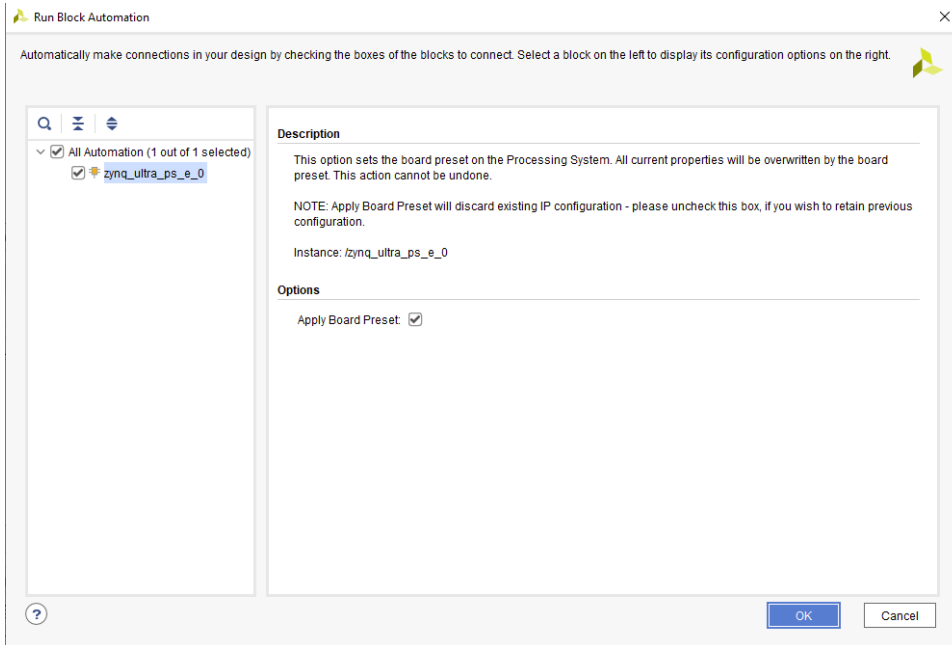
1. Install Board Parts, see: [Board Part Installation](#)
2. Create Project with Board Part



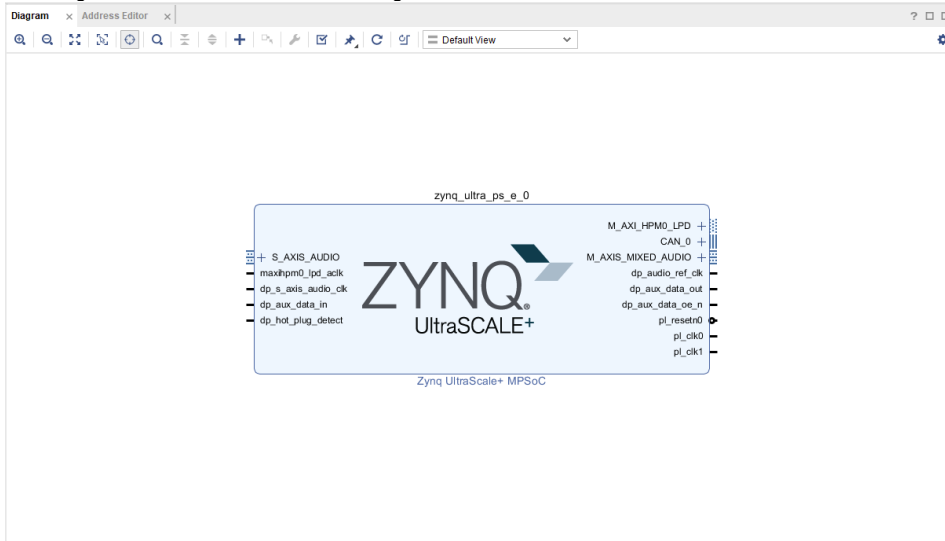
3. Create Block-Design and add Zynq-Processing System



#### 4. Run Block Automation



#### 5. PS configuration is finished with basic Settings:



6. (optional) Some Reference Design contains local extensions for some carrier depended configuration, located in the subfolder <board\_parts>/. These Scripts must be source manually on the TCL-Console after "Block-Design Automation"