

TEI0006 TRM

[Download PDF version of this document.](#)

Table of Contents

- [Overview](#)
 - [Key Features](#)
 - [Block Diagram](#)
 - [Main Components](#)
 - [Initial Delivery State](#)
 - [Configuration Signals](#)
- [Signals, Interfaces and Pins](#)
 - [Board to Board \(B2B\) I/Os](#)
 - [JTAG Interface](#)
 - [MIO Pins](#)
- [On-board Peripherals](#)
 - [QSPI Flash Memory](#)
 - [EEPROM](#)
 - [DDR3 SDRAM](#)
 - [Ethernet PHY](#)
 - [Intel MAX 10](#)
 - [LEDs](#)
 - [Clock Sources](#)
 - [CryptoAuthentication](#)
- [Power and Power-On Sequence](#)
 - [Power Supply](#)
 - [Power Consumption](#)
 - [Power Distribution Dependencies](#)
 - [Power-On Sequence](#)
 - [Power Rails](#)
 - [Bank Voltages](#)
- [Board to Board Connectors](#)
 - [Connector Speed Ratings](#)
 - [Current Rating](#)
 - [Connector Mechanical Ratings](#)
 - [Manufacturer Documentation](#)
- [Technical Specifications](#)
 - [Absolute Maximum Ratings](#)
 - [Recommended Operating Conditions](#)
 - [Physical Dimensions](#)
- [Currently Offered Variants](#)
- [Revision History](#)
 - [Hardware Revision History](#)
 - [Document Change History](#)
- [Disclaimer](#)
 - [Data Privacy](#)
 - [Document Warranty](#)
 - [Limitation of Liability](#)
 - [Copyright Notice](#)
 - [Technology Licenses](#)
 - [Environmental Protection](#)
 - [REACH, RoHS and WEEE](#)

Overview

The Trenz Electronic TEI0006 is an industrial grade module based on Intel® Cyclone 10 GX. Intel® Cyclone 10 GX device family delivers higher core, transceiver, and I/O performance than the previous generation of low cost FPGAs.

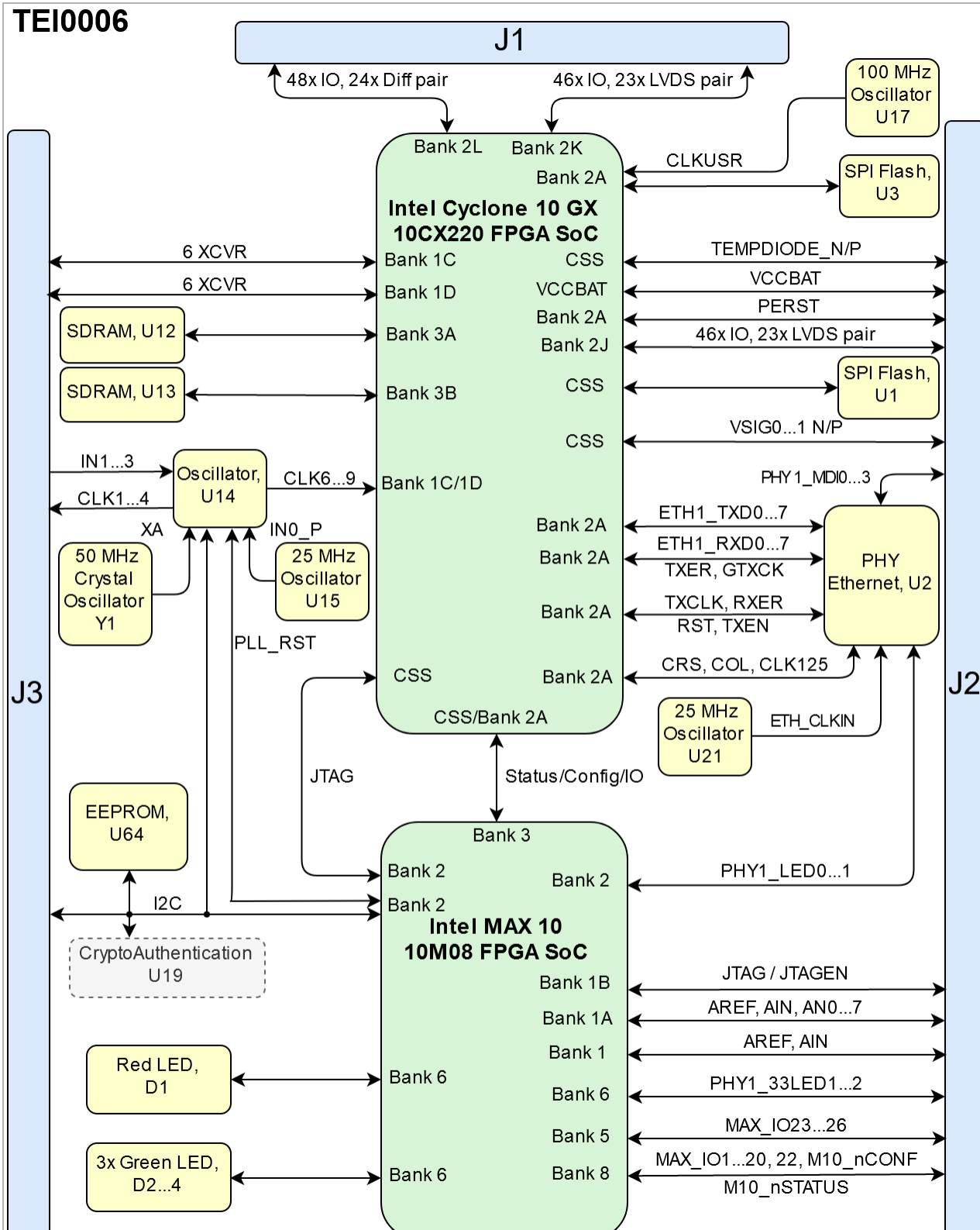
Refer to <http://trenz.org/tei0006-info> for the current online version of this manual and other available documentation.

Key Features

- Intel® Cyclone 10 GX Industrial [10CX220YF780I5G]
 - Package: FBGA-780
 - Speed Grade: 5 (Fastest)
 - Temperature: -40°C to 100°C
 - Package compatible device 10CX150 and 10CX105 as assembly variant on request possible
- 2x SDRAM DDR3L Memory IC 8 Gbit (1 GByte), Half rate: 533 MHz; Quarter rate: max. 800 MHz
- 2x SPI Flash, 1 Gbit (128 MByte)
- 1x Gigabit Ethernet
- 10-Channel, Any-Frequency, Any-Output Jitter Attenuator/Clock Multiplier
- Intel® MAX 10 as System Controller (CPLD)
- 2 Kbit EEPROM Memory
- 4x User LED
- I/O interfaces: 226/94/46 (IOs/DIFF. Pairs/LVDS Pairs)
- 12 x 12.5Gbps Transceiver
- Board to Board (B2B) Connection: Plug-on module with 3 x 160-pin Samtec Razor Beam (ST5) connectors
- 5 V Power Supply
- Dimension: 80m x 60m

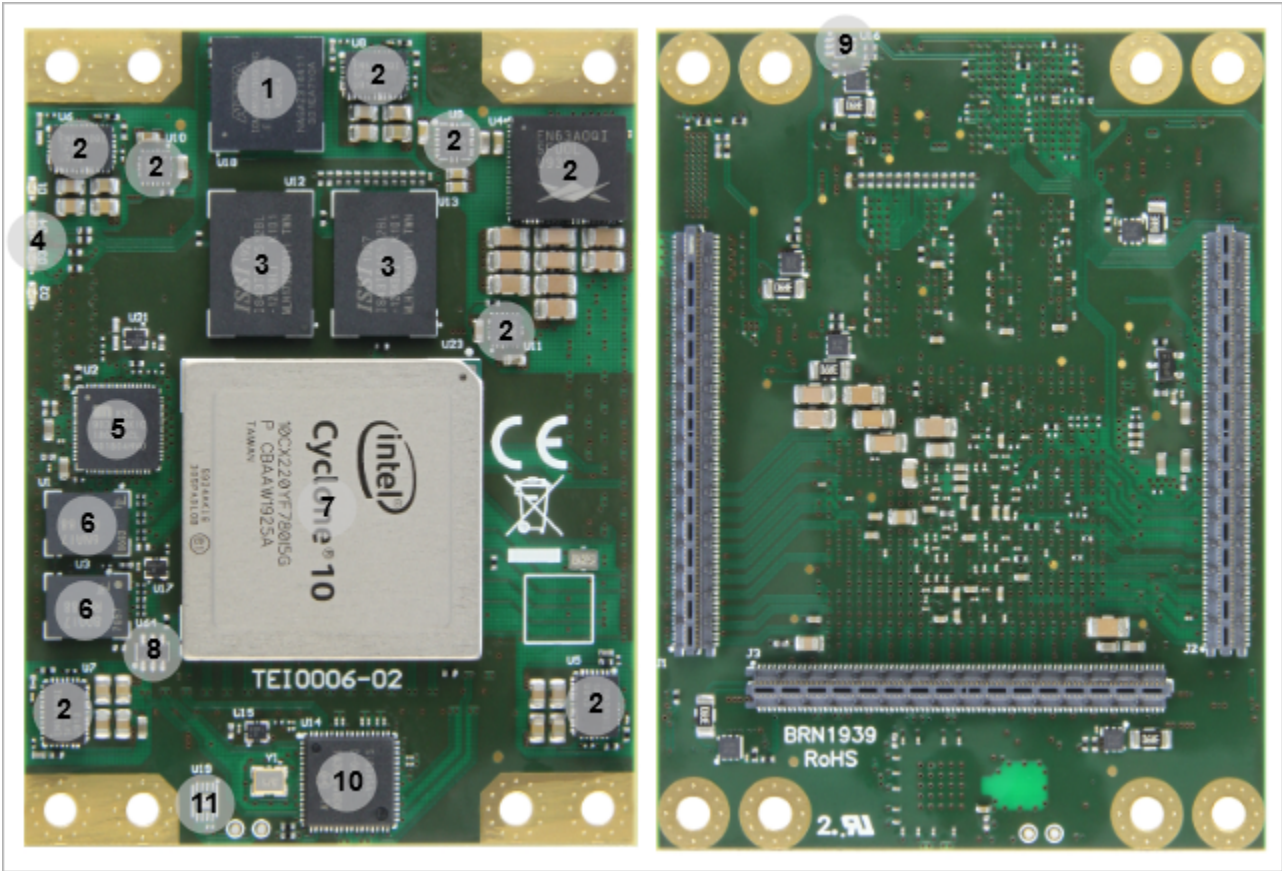
Block Diagram

J3



TEI0006 block diagram

Main Components



TEI0006 main components

- 1. Intel® MAX 10, U18
- 2. DC/DC convertor, U4...11
- 3. SDRAM DDR3 Memory, U12 - U13
- 4. User LEDs, D1...4
- 5. Ethernet Transceiver, U2
- 6. SPI Flash Memory, U1 - U3
- 7. Intel® Cyclone 10 GX, U23
- 8. EEPROM, U64
- 9. Buffer, U16
- 10. 10-Channel Clock Multiplier, U14
- 11. CryptoAuthentication Device (optional), U19

Initial Delivery State

Storage device name	Content	Notes
Intel® MAX 10	Programmed	See CPLD Firmware

Quad SPI Flash	Not Programmed	
EEPROM	Programmed	Ethernet MAC
DDR3 SDRAM	Not Programmed	

Initial delivery state of programmable devices on the module

Configuration Signals

The TEI0006 module can be configured using different modes. Mode selection can be done using MSEL[2:0]. MSEL2 is connected to GND so mode selection can be done using MSEL[1:0] which are connected to Bank 3 of Intel Max 10.

MODE Signal State	MSEL2	MSEL1	MSEL0	Boot Mode
MSEL[2:0]	0	1	0	AS / Fast
	0	1	1	AS / Standard
	0	0	0	PS and FPP / Fast
	0	0	1	PS and FPP / Standard

Boot process.

By tying the CONF_DONE, NSTATUS, and NCONFIG pins together, the devices initialize and enter user mode at the same time. If any device in the chain detects an error, configuration stops for the entire chain and you must reconfigure all the devices. For example, if the first device in the chain flags an error on the NSTATUS pin, it resets the chain by pulling its NSTATUS pin low.

Signals	Connected to	Description	Note
NCONFIG	1.8V	Configuration trigger	From U18 (Intel MAX 10) - Bank 3
CONF_DONE	1.8V	Configuration done	To U18 (Intel MAX 10) - Bank 3
NSTATUS	1.8V	Configuration status	To U18 (Intel MAX 10) - Bank 3
DCLK	U1	Configuration clock	To U1 (Flash Memory) From U18 (Intel MAX 10) - Bank 3
AS_DATA0...3	U1	Configuration data	From U1 (Flash Memory)

Configuration signals.

Signal	B2B	Connected to	Note
PERST	J2-99	Bank A2	

Reset process.

Signals, Interfaces and Pins

Board to Board (B2B) I/Os

FPGA bank number and number of I/O signals connected to the B2B connector:

FPGA	FPGA Bank	B2B Connector	I/O Signal Count	Voltage Level	Notes
Intel Cyclone 10 GX	Bank 1C	J3	12 Diff pair	0.95V	GXBL1C_RX0...5 N/P, GXBL1C_TX0...5 N/P
	Bank 1D	J3	12 Diff pair	0.95V	GXBL1D_RX0...5 N/P, GXBL1D_TX0...5 N/P

	Bank 2A	J2	2 Single ended	1.8V	PERST, CLKUSR
	Bank 2J	J2	46 Single ended (23 Diff pair)	VCCIO2J	
	Bank 2K	J1	46 Single ended (23 Diff pair)	VCCIO2K	
	Bank 2L	J1	48 Single ended (24 Diff pair)	VADJ up to 3 V	
	Bank 3A	-	-	1.35V	VDD_DDR
	Bank 3B	-	-	1.35V	VDD_DDR
Intel Max 10	Bank 1A	J2	8 Single ended	3.3V	
	Bank 1B	J2	5 Single ended	3.3V	
	Bank 2	J3	1 Single ended	1.8VIO	
	Bank 3	-	-	1.8VIO	
	Bank 5	J2	3 Single ended	3.3V	
	Bank 6	J2	2 Single ended	3.3V	
	Bank 8	J2	23 Single ended	3.3V	

General PL I/O to B2B connectors information

JTAG Interface

JTAG access to the TEI0006 SoM is through B2B connector J2. JTAGEN is pulled up to 3.3V and after power on, JTAG for MAX 10 CPLD is enabled. JTAG port of Cyclon 10 GX device is routed to MAX10 CPLD IOs. The default Firmware connects the JTAG port of the Cyclon 10 GX to the IO pins of the JTAG port in user IO mode. Setting JTAGEN to GND enables JTAG for the Cyclon 10 GX device.

JTAG Signal	B2B Connector	Note
TMS	J2-160	
TDI	J2-159	
TDO	J2-158	
TCK	J2-157	
JTAGEN	J2-105	Pulled up to 3.3V.

JTAG pins connection

MIO Pins

MIO Pin	Connected to	B2B	Notes
MAX_IO1...20, 22	U18 (Intel MAX 10) - Bank 8	J2	
MAX_IO23, 25, 26	U18 (Intel MAX 10) - Bank 5	J2	

MIOs pins

On-board Peripherals

Chip/Interface	Designator	Notes
QSPI Flash Memory	U1 - U3	U1- AS configuration
EEPROM	U64	
DDR3 SDRAM Memory	U12 - U13	
Ethernet PHY	U2	
Intel Max 10	U18	System controller
User LEDs	D1...4	D1 (Red), D2...4 (Green)
Oscillators	U14, U15, U17, U21, Y1	
CryptoAuthentication Device	U19	optional

On board peripherals

QSPI Flash Memory

The TEI0006 is equipped with two Micron SPI flash memory. On-board SPI flash memory is used to store initial FPGA configuration. Besides FPGA configuration, remaining free flash memory can be used for user application and data storage. All four SPI data lines are connected to the FPGA allowing x1 or x4 data bus widths. Maximum data rate depends on the selected bus width and clock frequency.

Designator	Schematic	Connected to	Notes
U1	NCSO	CSS Bank (Configuration Bank)	Used when you are not configuring using AS
	DCK	DCLK	AS Configuration Clock
	AS_DATA0	CSS Bank (Configuration Bank)	
	AS_DATA1	CSS Bank (Configuration Bank)	
	AS_DATA2	CSS Bank (Configuration Bank)	
	AS_DATA3	CSS Bank (Configuration Bank)	
U3	QSPI_CS	Bank 2A	
	QSPI_CK	Bank 2A	
	QSPI_DATA0	Bank 2A	
	QSPI_DATA1	Bank 2A	
	QSPI_DATA2	Bank 2A	
	QSPI_DATA3	Bank 2A	

Quad SPI interface MIOs and pins

EEPROM

Schematic	U64 EEPROM Pin	B2B	U18 Intel Max 10 Pin	Notes
I2C_SCL	SCL	J3-135	Bank 2 - K2	
I2C_SDA	SDA	J3-137	Bank 2 - L2	

I2C EEPROM interface MIOs and pins

Pins	I2C Address	Designator	Notes
I2C_SCL, I2C_SDA	0x53	U64	

I2C address for EEPROM

DDR3 SDRAM

The TEI0006 SoM has two 1 GByte volatile DDR3 SDRAM IC provided by Integrated Silicon Solution Inc for storing user application code and data.

- Part number: IS43TR16512BL
- Supply voltage: 1.35 V
- Speed: Half rate: 533 MHz; Quarter rate: max. 800 MHz
- Temperature: -40 °C to 95 °C

Ethernet PHY

Signal Name	Connected to	B2B	Signal Description
PHY1_MDI0_P	-	J2-93	
PHY1_MDI0_N	-	J2-91	
PHY1_MDI1_P	-	J2-87	
PHY1_MDI1_N	-	J2-85	
PHY1_MDI2_P	-	J2-81	
PHY1_MDI2_N	-	J2-79	
PHY1_MDI3_P	-	J2-75	
PHY1_MDI3_N	-	J2-73	
ETH1_RST	U23, Bank 2A	-	Pulled-up to DVDDH Voltage.
ETH1_MDC	U23, Bank 2A	-	Pulled-up to DVDDH Voltage.
ETH1_MDIO	U23, Bank 2A	-	Pulled-up to DVDDH Voltage.
ETH1_TXD0...7	U23, Bank 2A	-	8 bit Transfer
ETH1_RXD0...7	U23, Bank 2A	-	8 bit Receive
ETH1_GTXCK	U23, Bank 2A	-	
ETH1_TXCLK	U23, Bank 2A	-	
ETH1_TXEN	U23, Bank 2A	-	
ETH1_TXER	U23, Bank 2A	-	
ETH1_RXCK	U23, Bank 2A	-	Pulled-down to GND.
ETH1_RXDV	U23, Bank 2A	-	Pulled-down to GND.
PHY1_INT	-	-	Pulled-up to DVDDH Voltage.
PHY1_LED1	U18, Bank 2	-	Pulled-up to DVDDH Voltage.
PHY1_LED2	U18, Bank 2	-	Pulled-down to GND.
ETH1_CRS	U23, Bank 2A	-	
ETH1_XTAL_IN	ETH_CLKIN	-	From U21 (25 MHz Oscillator)

Ethernet PHY to Intel Cyclone 10 GX SoC connections

Intel MAX 10

The TEI0006 is equipped with an Intel MAX 10 device which is a single-chip, non-volatile low-cost programmable logic device (PLD) to integrate the optimal set of system components. Intel MAX 10 (U18) is power and configuration controller on TEI0006 SoM.

Intel Max 10 Bank	Signals	Connected to	Description	Notes
Bank 1A	AIN0...7	B2B- J2		
Bank 1B	TCK, TDO, TMS, TDI, JTAGEN	B2B- J2		
Bank 2	PHY1_LED1	Ethernet PHY, U2	Ethernet LED	Pulled-up to DVDDH.
	PHY1_LED2	Ethernet PHY, U2	Ethernet LED	Pulled-down to GND.
	F_TCK, F_TDO, F_TDI, F_TMS	Intel Cyclone 10 GX (U23) - Bank CSS	Intel Cyclone 10 JTAG signals	
	I2C_SDA, I2C_SCL	EEPROM, U64 B2B, J3 Programmable Oscillator, U14	I2C EEPROM signals	
	PLL_RST	Programmable Oscillator, U14	Oscillator reset signal	
Bank 3	NSTATUS, NCONFIG, CONF_DONE	Intel Cyclone 10 GX (U23) - Bank CSS	Intel Cyclone 10 Configuration signals	
	DCLK	Intel Cyclone 10 GX (U23) - Bank CSS SPI Flash, U1	Intel Cyclone 10 Configuration clock from Flash memory	
	MSEL0...1	Intel Cyclone 10 GX (U23) - Bank CSS	Intel Cyclone 10 Configuration mode signals	
	DEV_CLRN, INIT_DONE	Intel Cyclone 10 GX (U23) - Bank 2A		
	M10_IO0...4	Intel Cyclone 10 GX (U23) - Bank 2A		
Bank 5	DIS_GROUP1...4	N-Channel MOSFET, T1...4	Fast Discharching	
	MAX_IO23...26	B2B, J2	Intel MAX 10 GPIO	
	PG_0.95V, EN_0.95V	Voltage Regulator, U7	Power control signals	
	PG_1.8VIO, EN_1.8VIO	Voltage Regulator, U6		
Bank 6	M10_CLK	25 MHz Oscillator, U21	Intel MAX 10 Clock	
	VADJ_VS0...2, VADJ_EN	Voltage Regulator, U11	Power control signals	
	PG_1.35V, EN_1.35V	Voltage Regulator, U8		
	PG_1.8V, EN_1.8V	Voltage Regulator, U5		
	PG_VTT, EN_VTT	Voltage Regulator, U9		
	PG_0V9, EN_0V9	Voltage Regulator, U4		
	PHY1_33LED1...2	B2B, J2	Ethernet LED	
	LED_FP_1	D1	User LEDs	Red LED
Bank 8	LED_FP_2...4	D2...4		Green LED
	M10_nSTATUS, M10_nCONFIG	B2B, J2	Intel MAX 10 configuration signals	
	MAX_IO1...20, 22	B2B, J2	Intel MAX 10 GPIO	

Intel MAX 10 banks information

LEDs

Designator	Color	Connected to	Active Level	Note
D1	Red	LED_FP_1	Active high	
D2	Green	LED_FP_2	Active high	

D3	Green	LED_FP_3	Active high	
D4	Green	LED_FP_4	Active high	

On-board LEDs

Clock Sources

The TEI0006 has one crystal, three MEMS oscillators and a programmable clock generator.

Designator	Description	Frequency	Connected to
U21	MEMS Oscillator	25MHz	U2 Ethernet
U15	MEMS Oscillator	25MHz	IN0 of U14
U17	MEMS Oscillator	100 MHz	U23, BANK2A USRCLK
Y1	Crystal Oscillator	50MHz	crystal input of U14
U14	Programmable Oscillator	Variable	-

Oscillators

Signals	Clock Type	In/ Out	Connected to	Frequency	Note
IN0_P	Differential	In	Oscillator, U15	25 MHz	
IN0_N		In	GND		
IN3	Differential	In	B2B, J3	Variable	
XA, XB	Differential		Oscillator, Y1	50 MHz	
CLK0	Differential	Out	Intel Cyclone 10 GX (U23)- Bank 2A	User	Default off
CLK1...4	Differential	Out	B2B, J3	User	Default off
REFCLK_EMIFP	Differential	Out	Intel Cyclon 10 GX (U23)- Bank 3B	User	Default off
CLK6...7	Differential	Out	Intel Cyclon 10 GX (U23)- Bank 1D	User	Default off
CLK8...9	Differential	Out	Intel Cyclon 10 GX (U23)- Bank 1C	User	Default off

Programmable Oscillator connections

CryptoAuthentication

ATECC608A (U19) is a CryptoAuthentication device connected to the I²C bus. This chip is optional, for further description see datasheet of manufacturer.

Schematic	U19 Pin	B2B	U18 Intel Max 10 Pin	Notes
I2C_SCL	SCL	J3-135	Bank 2 - K2	-
I2C_SDA	SDA	J3-137	Bank 2 - L2	-

I2C Interface of CryptoAuthentication

Power and Power-On Sequence

Power Supply

Power supply with minimum current capability of 1 A for system startup is recommended.

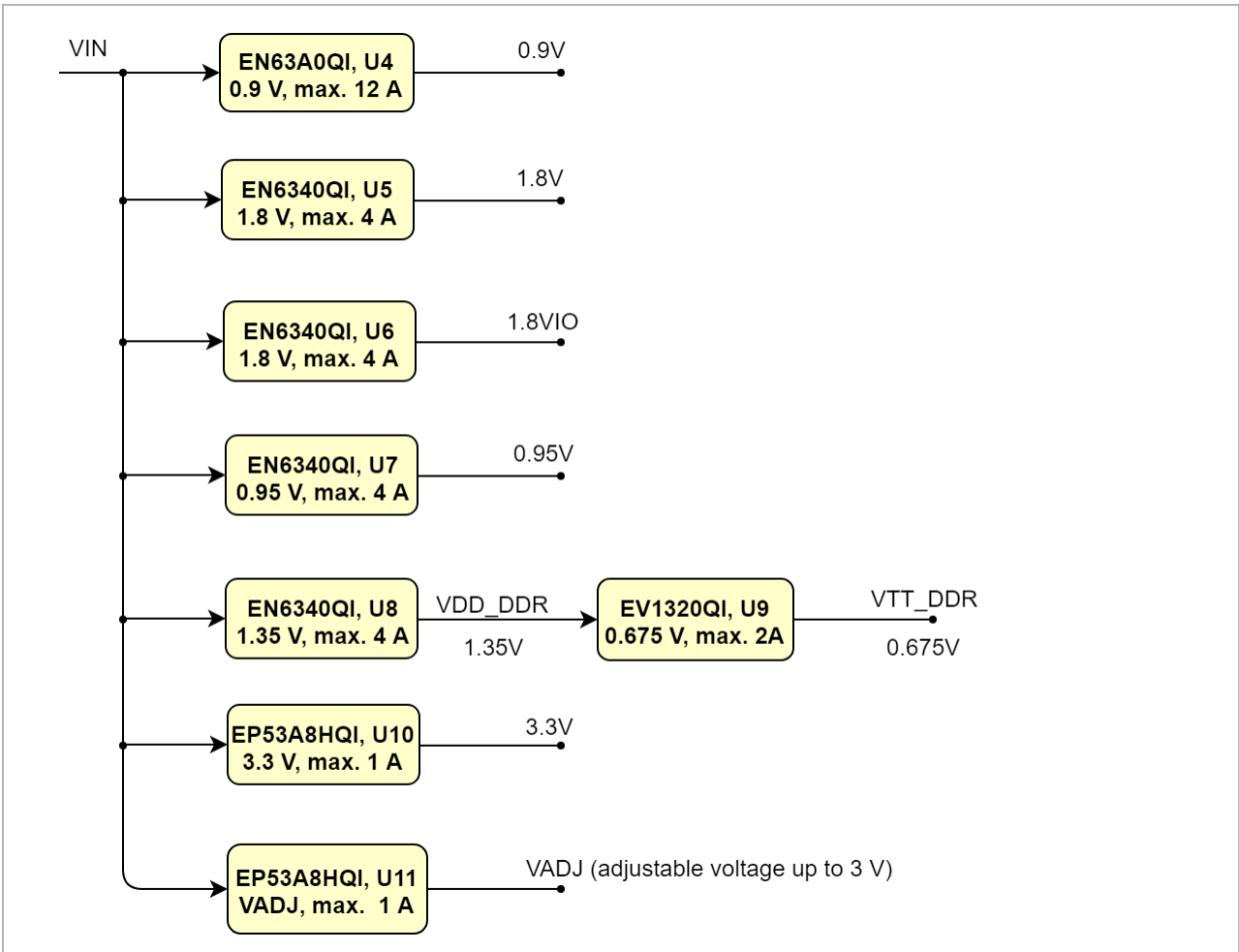
Power Consumption

FPGA	Typical Current
Intel Cyclone 10 GX	TBD*
Intel MAX 10	TBD*

Power Consumption

* TBD - To Be Determined

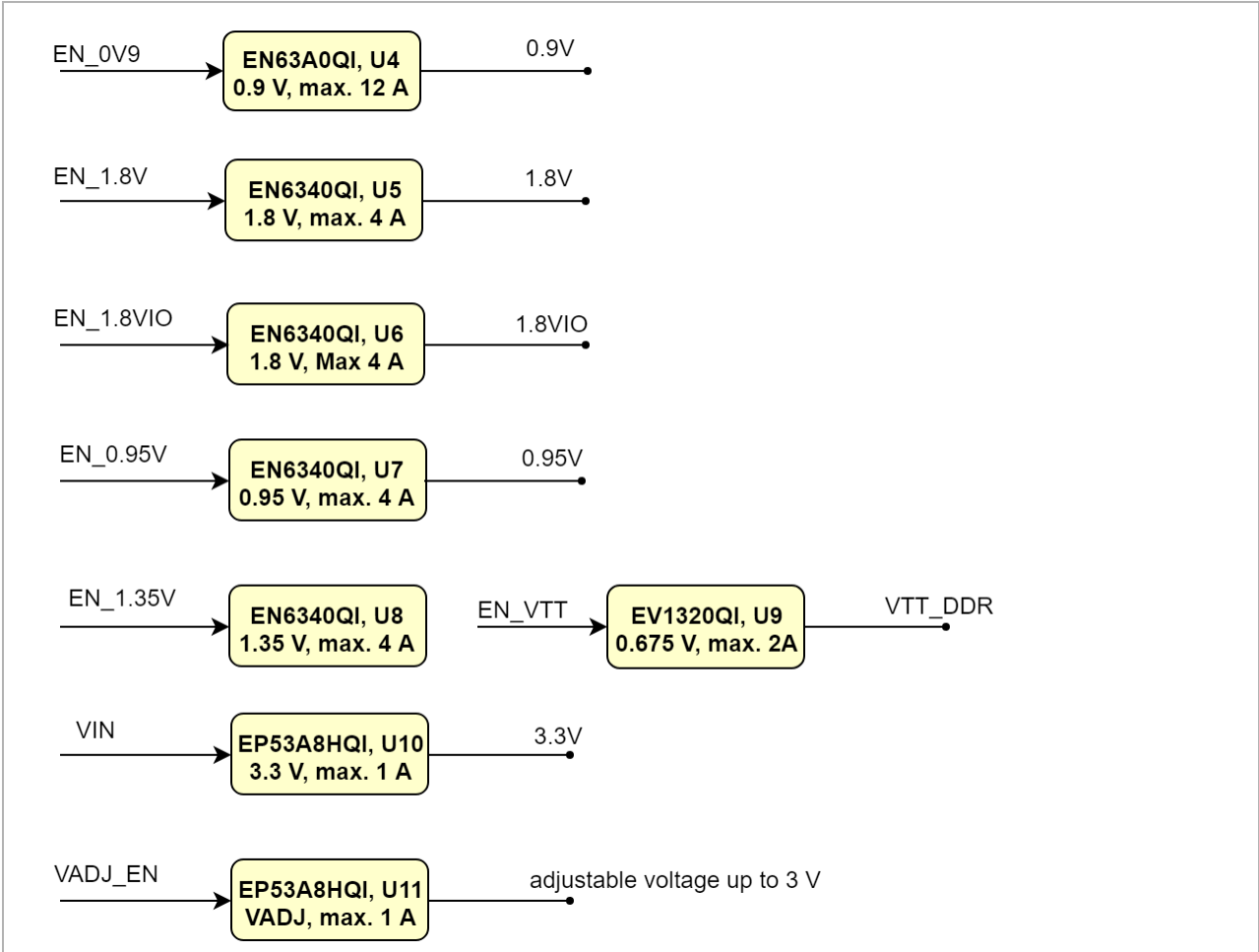
Power Distribution Dependencies



Power Distribution

Power-On Sequence

Voltage regulators can be enabled through U18 (Intel MAX 10) - Bank 5 and 6.



Power Sequence

Power Rails

Power Rail Name	B2B Connector J1 Pin	B2B Connector J2 Pin	B2B Connector J3 Pin	Voltage Level	Direction	Notes
VIN	145, 147,149, 151, 153, 155, 157, 159	-	-	5 V	Input	
VCCIO2K	53, 54	-	-	1.2 V, 1.25 V, 1.35 V, 1.5 V or 1.8 V	Input	
VADJ	140,142	-	-	adjustable between 1.8 V - 3.0 V	Output	Voltages according to EP53A8HQI datasheet but restricted to allowed bank voltage
VCCIO2J	-	29,30	-	1.2 V, 1.25 V, 1.35 V, 1.5 V or 1.8 V	Input	
3.3V	-	149,150	-	3.3 V	Output	

1.8_VIO	-	-	139	1.8 V	Output	
---------	---	---	-----	-------	--------	--

Module power rails.

Bank Voltages

FPGA	FPGA Bank	Voltage Level	Notes
Intel Cyclone 10 GX	Bank 1C	0.95 V	
	Bank 1D	0.95 V	
	Bank 2A	1.8 V	1.8VIO
	Bank 2J	1.2 V, 1.25 V, 1.35 V, 1.5 V or 1.8 V	VCCIO2J
	Bank 2K	1.2 V, 1.25 V, 1.35 V, 1.5 V or 1.8 V	VCCIO2K
	Bank 2L	adjustable between 1.8 V - 3.0 V	Voltages according to EP53A8HQI datasheet
	Bank 3A	1.35 V	VDD_DDR
	Bank 3B	1.35 V	VDD_DDR
Intel Max 10	Bank 1A	3.3 V	
	Bank 1B	3.3 V	
	Bank 2	1.8 V	1.8VIO
	Bank 3	1.8 V	1.8VIO
	Bank 5	3.3V	
	Bank 6	3.3V	
	Bank 8	3.3V	

SoC bank voltages.

Board to Board Connectors

The module has three 160-pin double-row REF-192552-02 connector on the bottom side. The counterpart REF-192552-01 is placed on the base board.

Order number	REF Number	Samtec Number	Type	Mated Height	Data sheet	Comment
27220	REF-192552-02	ST5-80-1.50-L-D-P-TR	Module connector	5 mm	http://suddendocs.samtec.com/catalog_english/st5.pdf	Standard connector used on module
27219	REF-192552-01	SS5-80-3.50-L-D-K-TR	Baseboard connector	5 mm	http://suddendocs.samtec.com/catalog_english/ss5.pdf	Standard connector used on board

Connectors.

With different connectors from the used series other mating heights are possible (according to the [Datasheet](#)). The module and base board can be manufactured using other connectors upon request.

Connector Specifications	Value
Insulator material	Liquid crystal polymer
Stacking height	5 mm

Contact material	Phosphor-bronze
Plating	Au or Sn over 50 " (1.27 m) Ni
Current rating	1.6 A per pin (2 pins powered)
Operating temperature range	-55 °C to +125 °C
RoHS compliant	Yes

Connector specifications.

Connector Speed Ratings

The LSHM connector speed rating depends on the stacking height; please see the following table:

Stacking height	Speed rating
5 mm, Single-Ended	13.5GHz / 27Gbps
5 mm, Differential	20GHz / 40Gbps
4 mm, Single-Ended	13GHz / 26Gbps
4 mm, Differential	13.5GHz / 27Gbps

Speed rating.

Current Rating

Current rating of Samtec Razor Beam™ SS5/ST5 B2B connectors is 1.6A per pin (2 pins powered).

Connector Mechanical Ratings

- Shock: 100G, 6 ms sawtooth wave
- Vibration: 7.56G 'RMS', 2 hours per axis, 3 axes total

Manufacturer Documentation

File	Modified
PDF File hsc-report-sma_st5-ss5-04mm_web.pdf	07 06, 2019 by John Hartfiel
PDF File hsc-report-sma_st5-ss5-05mm_web.pdf	07 06, 2019 by John Hartfiel
PDF File ss5_catalog.pdf	07 06, 2019 by John Hartfiel
PDF File ss5-st5_specs.pdf	07 06, 2019 by John Hartfiel

[Download All](#)

Technical Specifications

Absolute Maximum Ratings

Symbols	Description	Min	Max	Unit	Note
VIN	Power supply	-0.3	6.0	V	Determined by U10.
VCCIO - 3 V I/O	I/O buffers power supply	-0.5	4.10	V	Intel Cyclone 10 GX
VCCIO - LVDS I/O	I/O buffers power supply	-0.5	2.46	V	Intel Cyclone 10 GX
VADJ	Adjustable voltage	-0.5	4.10	V	Intel Cyclone 10 GX
T_STG	Storage temperature	-40	85	°C	

Absolute maximum ratings

Recommended Operating Conditions

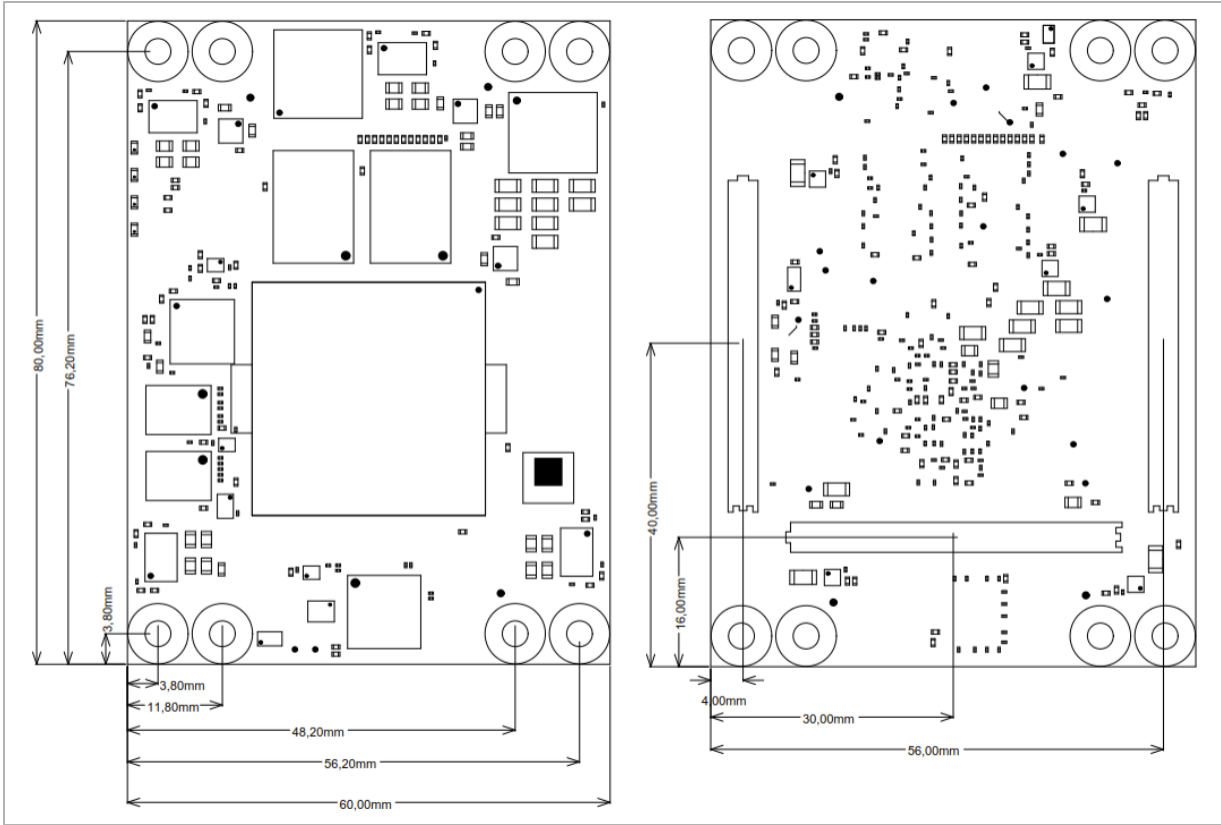
Operating temperature range depends also on customer design and cooling solution. Please contact us for options.

Parameter	Min	Max	Unit	Reference Document
VIN	5.0	5.0	V	
VCCIO	2.85	3.15	V	See Intel Cyclone 10 GX datasheet.
VADJ	2.85	3.15	V	VCCIO

Recommended operating conditions.

Physical Dimensions

- Module size: 60 mm × 80 mm. Please download the assembly diagram for exact numbers.
- Mating height with standard connectors: 5 mm.
- PCB thickness: 1.7 mm



Physical Dimension

Currently Offered Variants

Trenz shop TEI0006 overview page	
English page	German page

Trenz Electronic Shop Overview

Revision History

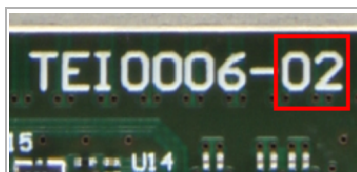
Hardware Revision History

Date	Revision	Changes	Documentation Link
202-12-23	03	<ul style="list-style-type: none">two input clock signals on B2B connected directly to GXBL1C bank	REV03

2019-09-11	02	<ul style="list-style-type: none"> added 100MHz MEMS oscillator, remove CLKUSR signal from J2 replaced U21/U15 by SiT8008 added pull-up to M10_NSTATUS signal added pull-up to M10_DEVCLRN, removed signal from J2 added optional CryptoAuthentication chip U19 	REV02
2018-08-10	01	-	REV01

Hardware Revision History

Hardware revision number can be found on the PCB board together with the module model number separated by the dash.



Board hardware revision number.

Document Change History

Date	Revision	Contributor	Description
------	----------	-------------	-------------

<p>Error rendering macro 'page-info'</p> <p>Ambiguous method overloading for method jdk.proxy279.\$Proxy4022#hasContentLevelPermission. Cannot resolve which method to invoke for [null, class java.lang.String, class com.atlassian.confluence.pages.Page] due to overlapping prototypes between: [interface com.atlassian.confluence.user.ConfluenceUser, class java.lang.String, class com.atlassian.confluence.core.ContentEntityObject] [interface com.atlassian.user.User, class java.lang.String, class com.atlassian.confluence.core.ContentEntityObject]</p>	<p>Error rendering macro 'page-info'</p> <p>Ambiguous method overloading for method jdk.proxy279.\$Proxy4022#hasContentLevelPermission. Cannot resolve which method to invoke for [null, class java.lang.String, class com.atlassian.confluence.pages.Page] due to overlapping prototypes between: [interface com.atlassian.confluence.user.ConfluenceUser, class java.lang.String, class com.atlassian.confluence.core.ContentEntityObject] [interface com.atlassian.user.User, class java.lang.String, class com.atlassian.confluence.core.ContentEntityObject]</p>	<p>Error rendering macro 'page-info'</p> <p>Ambiguous method overloading for method jdk.proxy279.\$Proxy4022#hasContentLevelPermission. Cannot resolve which method to invoke for [null, class java.lang.String, class com.atlassian.confluence.pages.Page] due to overlapping prototypes between: [interface com.atlassian.confluence.user.ConfluenceUser, class java.lang.String, class com.atlassian.confluence.core.ContentEntityObject] [interface com.atlassian.user.User, class java.lang.String, class com.atlassian.confluence.core.ContentEntityObject]</p>	<ul style="list-style-type: none"> corrected Bank Voltages for Bank 2J (VCCIO2 J) and Bank 2K (VCCIO2 K)
2022-03-18	v.85	Vitali Tsiukala	<ul style="list-style-type: none"> Added Info about Gigabit Transceivers
2021-06-07	v.84	Martin Rohrmüller	<ul style="list-style-type: none"> corrected Physical Dimension figure updated to REV03
2020-01-17	v.82	Martin Rohrmüller	<ul style="list-style-type: none"> updated to REV02

2019-06-14	v.80	Pedram Babakhani	<ul style="list-style-type: none"> Figures updated Technical specifications updated
2019-05-29	v.69	Pedram Babakhani	<ul style="list-style-type: none"> initial release
--	all	<div> <p>Error rendering macro 'page-info'</p> <p>Ambiguous method overloading for method jdk.proxy279.\$Proxy4022#hasContentLevelPermission. Cannot resolve which method to invoke for [null, class java.lang.String, class com.atlassian.confluence.pages.Page] due to overlapping prototypes between: [interface com.atlassian.confluence.user.ConfluenceUser, class java.lang.String, class com.atlassian.confluence.core.ContentEntityObject] [interface com.atlassian.user.User, class java.lang.String, class com.atlassian.confluence.core.ContentEntityObject]</p> </div>	<ul style="list-style-type: none"> --

Document change history.

Disclaimer

Data Privacy

Please also note our data protection declaration at <https://www.trenz-electronic.de/en/Data-protection-Privacy>

Document Warranty

The material contained in this document is provided "as is" and is subject to being changed at any time without notice. Trenz Electronic does not warrant the accuracy and completeness of the materials in this document. Further, to the maximum extent permitted by applicable law, Trenz Electronic disclaims all warranties, either express or implied, with regard to this document and any information contained herein, including but not limited to the implied warranties of merchantability, fitness for a particular purpose or non infringement of intellectual property. Trenz Electronic shall not be liable for errors or for incidental or consequential damages in connection with the furnishing, use, or performance of this document or of any information contained herein.

Limitation of Liability

In no event will Trenz Electronic, its suppliers, or other third parties mentioned in this document be liable for any damages whatsoever (including, without limitation, those resulting from lost profits, lost data or business interruption) arising out of the use, inability to use, or the results of use of this document, any documents linked to this document, or the materials or information contained at any or all such documents. If your use of the materials or information from this document results in the need for servicing, repair or correction of equipment or data, you assume all costs thereof.

Copyright Notice

No part of this manual may be reproduced in any form or by any means (including electronic storage and retrieval or translation into a foreign language) without prior agreement and written consent from Trenz Electronic.

Technology Licenses

The hardware / firmware / software described in this document are furnished under a license and may be used /modified / copied only in accordance with the terms of such license.

Environmental Protection

To confront directly with the responsibility toward the environment, the global community and eventually also oneself. Such a resolution should be integral part not only of everybody's life. Also enterprises shall be conscious of their social responsibility and contribute to the preservation of our common living space. That is why Trenz Electronic invests in the protection of our Environment.

REACH, RoHS and WEEE

REACH

Trenz Electronic is a manufacturer and a distributor of electronic products. It is therefore a so called downstream user in the sense of [REACH](#). The products we supply to you are solely non-chemical products (goods). Moreover and under normal and reasonably foreseeable circumstances of application, the goods supplied to you shall not release any substance. For that, Trenz Electronic is obliged to neither register nor to provide safety data sheet. According to present knowledge and to best of our knowledge, no [SVHC \(Substances of Very High Concern\) on the Candidate List](#) are contained in our products. Furthermore, we will immediately and unsolicited inform our customers in compliance with REACH - Article 33 if any substance present in our goods (above a concentration of 0,1 % weight by weight) will be classified as SVHC by the [European Chemicals Agency \(ECHA\)](#).

RoHS

Trenz Electronic GmbH herewith declares that all its products are developed, manufactured and distributed RoHS compliant.

WEEE

Information for users within the European Union in accordance with Directive 2002/96/EC of the European Parliament and of the Council of 27 January 2003 on waste electrical and electronic equipment (WEEE).

Users of electrical and electronic equipment in private households are required not to dispose of waste electrical and electronic equipment as unsorted municipal waste and to collect such waste electrical and electronic equipment separately. By the 13 August 2005, Member States shall have ensured that systems are set up allowing final holders and distributors to return waste electrical and electronic equipment at least free of charge. Member States shall ensure the availability and accessibility of the necessary collection facilities. Separate collection is the precondition to ensure specific treatment and recycling of waste electrical and electronic equipment and is necessary to achieve the chosen level of protection of human health and the environment in the European Union. Consumers have to actively contribute to the success of such collection and the return of waste electrical and electronic equipment. Presence of hazardous substances in electrical and electronic equipment results in potential effects on the environment and human health. The symbol consisting of the crossed-out wheeled bin indicates separate collection for waste electrical and electronic equipment.

Trenz Electronic is registered under WEEE-Reg.-Nr. DE97922676.

Error rendering macro 'page-info'

Ambiguous method overloading for method `jdk.proxy279.$Proxy4022#hasContentLevelPermission`. Cannot resolve which method to invoke for `[null, class java.lang.String, class com.atlassian.confluence.pages.Page]` due to overlapping prototypes between: `[interface com.atlassian.confluence.user.ConfluenceUser, class java.lang.String, class com.atlassian.confluence.core.ContentEntityObject]` `[interface com.atlassian.user.User, class java.lang.String, class com.atlassian.confluence.core.ContentEntityObject]`