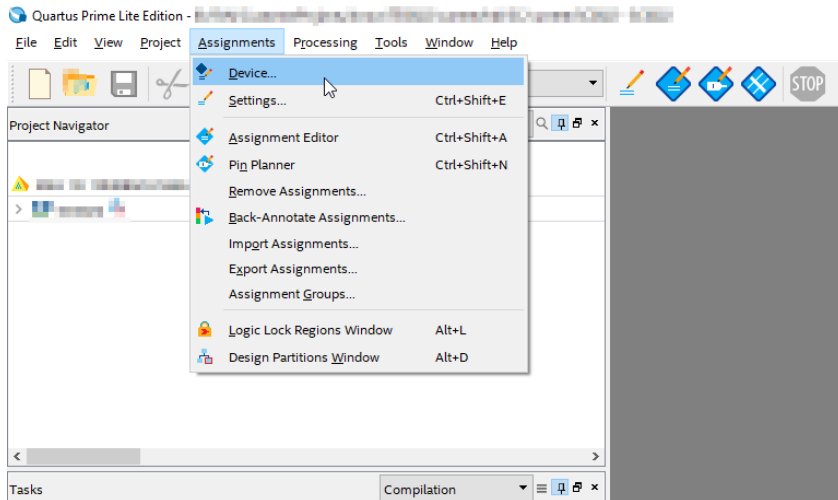


Intel MAX 10 JTAG muxing

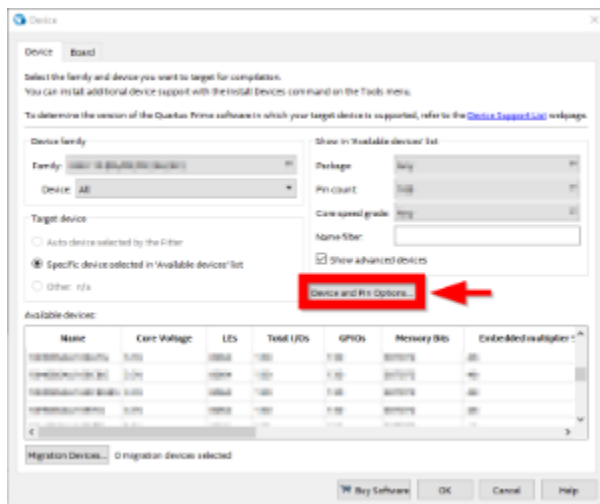
Intel MAX 10 - JTAG muxing

If customer firmware should feature JTAG muxing it is necessary to select "Enable JTAG pin sharing" within Quartus Prime.

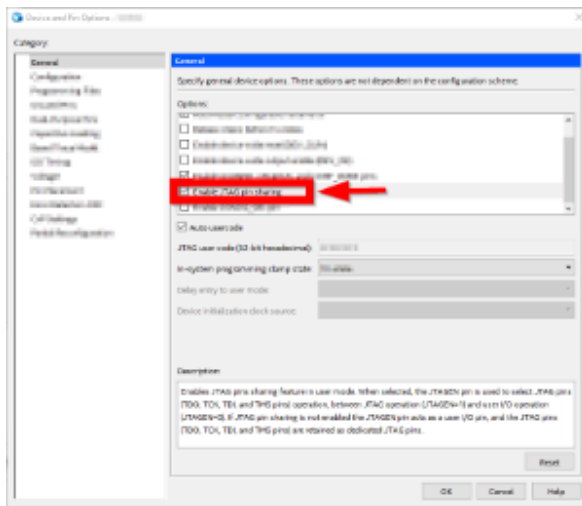
This can be done by selecting *Assignment Device*, as shown in the following figure.



In the next window it is necessary to click on *Device and Pin Options...*, as visible in the next figure.



Then select "Enable JTAG pin sharing" in the *Options* box as visible in the next figure.



With this option, JTAG muxing should be possible via Intel MAX 10 JTAGEN pin.